

## RM53 Rabbit pAb

CatalogNo: YN0360

### | Key Features

#### Host Species

- Rabbit

#### Reactivity

- Human, Mouse

#### Applications

- WB, ELISA

#### MW

- 12kD (Observed)

#### Isotype

- IgG

### | Recommended Dilution Ratios

**WB 1:500-2000**

**ELISA 1:5000-20000**

### | Storage

**Storage\*** -15°C to -25°C/1 year (Do not lower than -25°C)

**Formulation** Liquid in PBS containing 50% glycerol, 0.5% BSA and 0.02% sodium azide.

### | Basic Information

**Clonality** Polyclonal

### | Immunogen Information

**Immunogen** Synthesized peptide derived from human protein . at AA range: 30-110

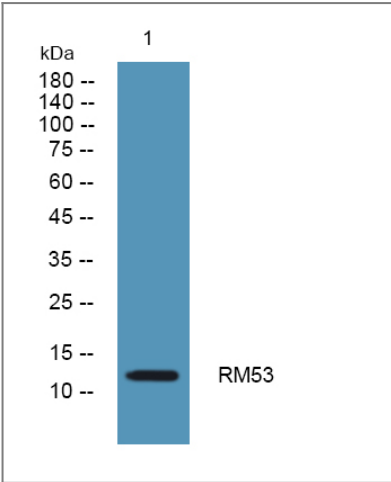
**Specificity** RM53 Polyclonal Antibody detects endogenous levels of protein.

### | Target Information

**Gene name** MRPL53

<b>Protein Name</b>	39S ribosomal protein L53, mitochondrial (L53mt) (MRP-L53)		
	<b>Organism</b>	<b>Gene ID</b>	<b>UniProt ID</b>
	Human	<a href="#">116540;</a>	<a href="#">Q96EL3;</a>
	Mouse		<a href="#">Q9D1H8;</a>
<b>Cellular Localization</b>	Mitochondrion .		
<b>Tissue specificity</b>	Skin,		

| Validation Data



Western blot analysis of lysates from DU145 cells, primary antibody was diluted at 1:1000, 4°over night

| Contact information

Orders: order@immunoway.com  
Support: tech@immunoway.com  
Telephone: 877-594-3616 (Toll Free), 408-747-0185  
Website: http://www.immunoway.com  
Address: 2200 Ringwood Ave San Jose, CA 95131 USA



Please scan the QR code to access additional product information:  
**RM53 Rabbit pAb**