

## RM37 Rabbit pAb

CatalogNo: YN0356

### Key Features

#### Host Species

- Rabbit

#### Reactivity

- Human, Mouse, Rat

#### Applications

- WB, ELISA

#### MW

- 46kD (Observed)

#### Isotype

- IgG

### Recommended Dilution Ratios

WB 1:500-2000

ELISA 1:5000-20000

### Storage

**Storage\*** -15°C to -25°C/1 year (Do not lower than -25°C)

**Formulation** Liquid in PBS containing 50% glycerol, 0.5% BSA and 0.02% sodium azide.

### Basic Information

**Clonality** Polyclonal

### Immunogen Information

**Immunogen** Synthesized peptide derived from human protein . at AA range: 240-320

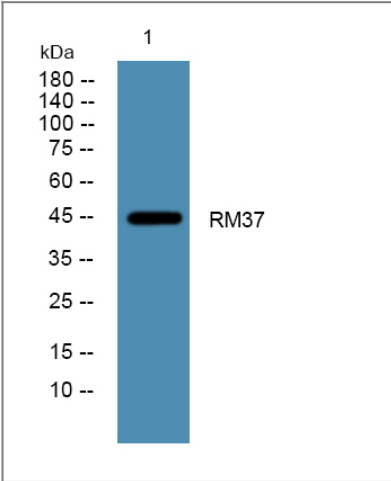
**Specificity** RM37 Polyclonal Antibody detects endogenous levels of protein.

### Target Information

**Gene name** MRPL37 MRPL2 RPML2 HSPC235

<b>Protein Name</b>	39S ribosomal protein L37, mitochondrial (L37mt) (MRP-L37) (39S ribosomal protein L2, mitochondrial) (L2mt) (MRP-L2)		
	<b>Organism</b>	<b>Gene ID</b>	<b>UniProt ID</b>
	Human	<a href="#">51253</a> ;	<a href="#">Q9BZE1</a> ;
	Mouse		<a href="#">Q921S7</a> ;
	Rat		<a href="#">Q6AXT0</a> ;
<b>Cellular Localization</b>	Mitochondrion .		
<b>Tissue specificity</b>	Placenta,Skeletal muscle,Umbilical cord blood,		
<b>Function</b>	similarity:Belongs to the ribosomal protein S30/L37 family.,		

Validation Data



Western blot analysis of lysates from PC12 cells, primary antibody was diluted at 1:1000, 4°over night

Contact information

Orders: [order@immunoway.com](mailto:order@immunoway.com)  
 Support: [tech@immunoway.com](mailto:tech@immunoway.com)  
 Telephone: 877-594-3616 (Toll Free), 408-747-0185  
 Website: <http://www.immunoway.com>  
 Address: 2200 Ringwood Ave San Jose, CA 95131 USA



Please scan the QR code  
 to access additional  
 product information:  
**RM37 Rabbit pAb**