

RM30 Rabbit pAb

CatalogNo: YN0355

Key Features

Host Species

- Rabbit

Reactivity

- Human, Mouse, Rat

Applications

- WB, ELISA

MW

- 17kD (Observed)

Isotype

- IgG

Recommended Dilution Ratios

WB 1:500-2000

ELISA 1:5000-20000

Storage

Storage* -15°C to -25°C/1 year (Do not lower than -25°C)

Formulation Liquid in PBS containing 50% glycerol, 0.5% BSA and 0.02% sodium azide.

Basic Information

Clonality Polyclonal

Immunogen Information

Immunogen Synthesized peptide derived from human protein . at AA range: 40-120

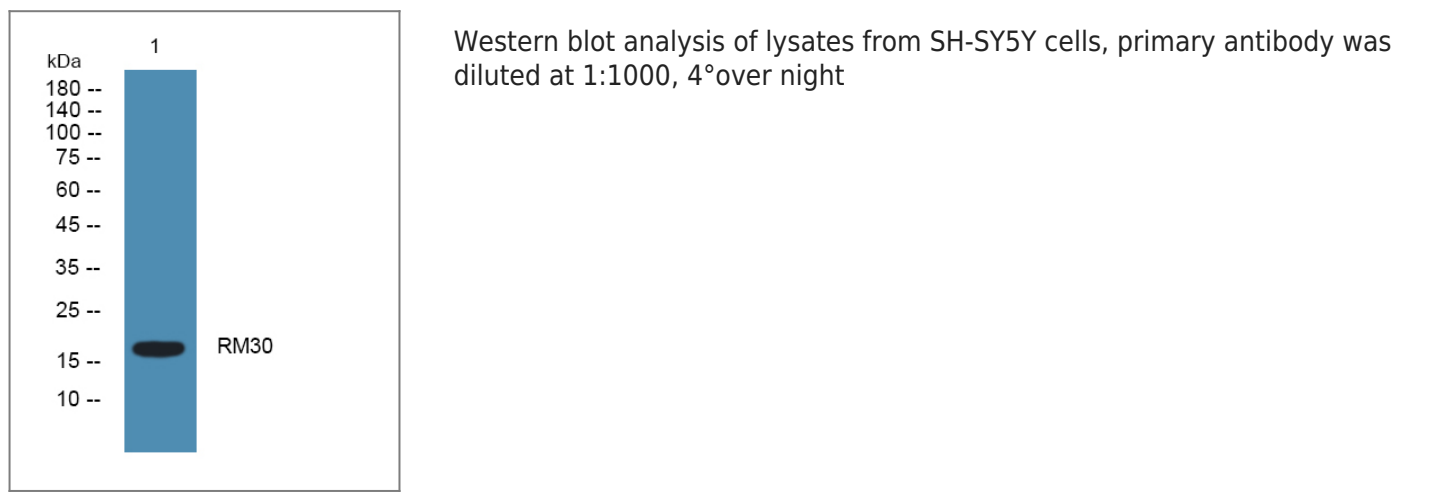
Specificity RM30 Polyclonal Antibody detects endogenous levels of protein.

Target Information

Gene name MRPL30 MRPL28 RPML28 HSPC249

Protein Name	39S ribosomal protein L30, mitochondrial (L30mt) (MRP-L30) (39S ribosomal protein L28, mitochondrial) (L28mt) (MRP-L28)		
	Organism	Gene ID	UniProt ID
	Human	51263;	Q8TCC3;
	Mouse		Q9D7N6;
	Rat		P0C2C1;
Cellular Localization	Mitochondrion .		
Tissue specificity	Kidney,Umbilical cord blood,Uterus,		
Function	similarity:Belongs to the ribosomal protein L30P family.,		

Validation Data



Contact information

Orders: order@immunoway.com
 Support: tech@immunoway.com
 Telephone: 877-594-3616 (Toll Free), 408-747-0185
 Website: <http://www.immunoway.com>
 Address: 2200 Ringwood Ave San Jose, CA 95131 USA



Please scan the QR code
 to access additional
 product information:
RM30 Rabbit pAb