

## PLCA Rabbit pAb

CatalogNo: YN0340

### Key Features

#### Host Species

- Rabbit

#### Reactivity

- Human, Mouse

#### Applications

- WB, ELISA

#### MW

- 31kD (Observed)

#### Isotype

- IgG

### Recommended Dilution Ratios

WB 1:500-2000

ELISA 1:5000-20000

### Storage

**Storage\*** -15°C to -25°C/1 year (Do not lower than -25°C)

**Formulation** Liquid in PBS containing 50% glycerol, 0.5% BSA and 0.02% sodium azide.

### Basic Information

**Clonality** Polyclonal

### Immunogen Information

**Immunogen** Synthesized peptide derived from human protein . at AA range: 150-230

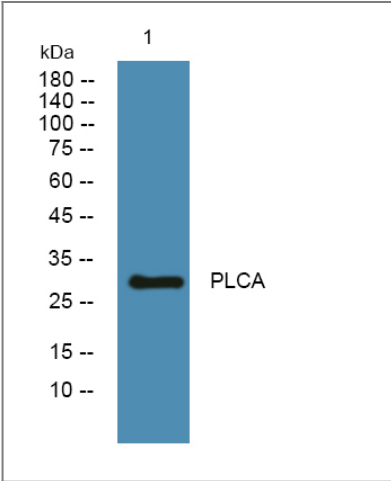
**Specificity** PLCA Polyclonal Antibody detects endogenous levels of protein.

### Target Information

**Gene name** AGPAT1 G15

<b>Protein Name</b>	1-acyl-sn-glycerol-3-phosphate acyltransferase alpha (1-acylglycerol-3-phosphate O-acyltransferase 1) (1-AGP acyltransferase 1) (1-AGPAT 1) (Lysophosphatidic acid acyltransferase alpha) (LPAAT-alpha) (Protein G15)		
	<b>Organism</b>	<b>Gene ID</b>	<b>UniProt ID</b>
	Human	<a href="#">10554;</a>	<a href="#">Q99943;</a>
	Mouse		<a href="#">Q35083;</a>
<b>Cellular Localization</b>	Endoplasmic reticulum membrane ; Multi-pass membrane protein .		
<b>Tissue specificity</b>	Widely expressed. Expressed in adipose tissue and at high levels in testis and pancreas. Expressed at lower levels in tissues such as heart, brain, placenta, kidney, lung, spleen, thymus, prostate, ovary, intestine, colon, leukocyte and liver.		
<b>Function</b>	Catalytic activity:Acyl-CoA + 1-acyl-sn-glycerol 3-phosphate = CoA + 1,2-diacyl-sn-glycerol 3-phosphate.,Domain:The HXXXXD motif is essential for acyltransferase activity and may constitute the binding site for the phosphate moiety of the glycerol-3-phosphate.,Function:Converts lysophosphatidic acid (LPA) into phosphatidic acid by incorporating an acyl moiety at the sn-2 position of the glycerol backbone.,pathway:Phospholipid metabolism; CDP-diacylglycerol biosynthesis; CDP-diacylglycerol from sn-glycerol 3-phosphate: step 2/3.,similarity:Belongs to the 1-acyl-sn-glycerol-3-phosphate acyltransferase family.,		

Validation Data



Western blot analysis of lysates from PC12 cells, primary antibody was diluted at 1:1000, 4°over night

Contact information

Orders: order@immunoway.com  
Support: tech@immunoway.com  
Telephone: 877-594-3616 (Toll Free), 408-747-0185  
Website: http://www.immunoway.com  
Address: 2200 Ringwood Ave San Jose, CA 95131 USA



Please scan the QR code  
to access additional  
product information:  
**PLCA Rabbit pAb**

---

For Research Use Only. Not for Use in Diagnostic Procedures.

[Antibody](#) | [ELISA Kits](#) | [Protein](#) | [Reagents](#)