

SP6 Rabbit pAb

CatalogNo: YN0331

Key Features

Host Species

- Rabbit

Reactivity

- Human, Mouse

Applications

- WB, ELISA

MW

- 41kD (Observed)

Isotype

- IgG

Recommended Dilution Ratios

WB 1:500-2000

ELISA 1:5000-20000

Storage

Storage* -15°C to -25°C/1 year (Do not lower than -25°C)

Formulation Liquid in PBS containing 50% glycerol, 0.5% BSA and 0.02% sodium azide.

Basic Information

Clonality Polyclonal

Immunogen Information

Immunogen Synthesized peptide derived from human protein . at AA range: 150-230

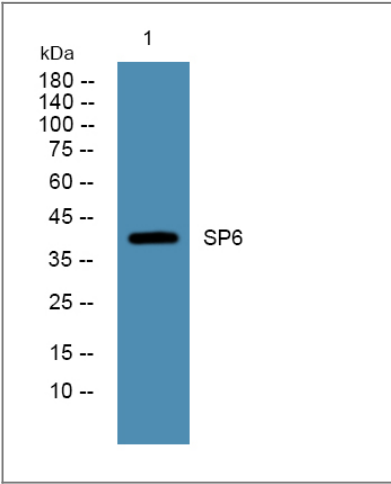
Specificity SP6 Polyclonal Antibody detects endogenous levels of protein.

Target Information

Gene name SP6 KLF14

Protein Name	Transcription factor Sp6 (Krueppel-like factor 14)		
	Organism	Gene ID	UniProt ID
	Human	80320;	Q3SY56;
	Mouse		Q9ESX2;
Cellular Localization	Nucleus .		
Tissue specificity	Ubiquitous.		
Function	Function:Promotes cell proliferation.,similarity:Belongs to the Sp1 C2H2-type zinc-finger protein family.,similarity:Contains 3 C2H2-type zinc fingers.,tissue specificity:Ubiquitous.,		

| Validation Data



Western blot analysis of lysates from K562 cells, primary antibody was diluted at 1:1000, 4°over night

| Contact information

Orders: order@immunoway.com
Support: tech@immunoway.com
Telephone: 877-594-3616 (Toll Free), 408-747-0185
Website: http://www.immunoway.com
Address: 2200 Ringwood Ave San Jose, CA 95131 USA



Please scan the QR code to access additional product information:
SP6 Rabbit pAb