

ALKB7 Rabbit pAb

CatalogNo: YN0323

Key Features

Host Species

- Rabbit

Reactivity

- Human, Mouse

Applications

- WB, ELISA

MW

- 24kD (Observed)

Isotype

- IgG

Recommended Dilution Ratios

WB 1:500-2000**ELISA 1:5000-20000**

Storage

Storage*

-15°C to -25°C/1 year (Do not lower than -25°C)

Formulation

Liquid in PBS containing 50% glycerol, and 0.02% sodium azide.

Basic Information

Clonality

Polyclonal

Immunogen Information

Immunogen

Synthesized peptide derived from human protein . at AA range: 10-90

Specificity

ALKB7 Polyclonal Antibody detects endogenous levels of protein.

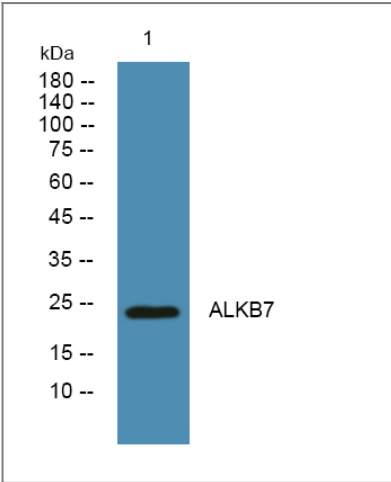
Target Information

Gene name

ALKBH7 ABH7 SPATA11 UNQ6002/PRO34564

Protein Name	Probable alpha-ketoglutarate-dependent dioxygenase ABH7 (Alkylated DNA repair protein alkB homolog 7) (Spermatogenesis cell proliferation-related protein) (Spermatogenesis-associated protein 11)		
	Organism	Gene ID	UniProt ID
	Human	84266;	Q9BT30;
	Mouse		Q9D6Z0;
Cellular Localization	Mitochondrion matrix .		
Tissue specificity	Widely expressed, with highest expression in pancreas, followed by spleen, prostate, ovary and placenta.		
Function	similarity:Belongs to the alkB family.,		

| Validation Data



Western blot analysis of lysates from A431 cells, primary antibody was diluted at 1:1000, 4°over night

| Contact information

Orders: order@immunoway.com
 Support: tech@immunoway.com
 Telephone: 877-594-3616 (Toll Free), 408-747-0185
 Website: <http://www.immunoway.com>
 Address: 2200 Ringwood Ave San Jose, CA 95131 USA



Please scan the QR code to access additional product information:
ALKB7 Rabbit pAb