

CENPK Rabbit pAb

CatalogNo: YN0307

| Key Features

Host Species

- Rabbit

Reactivity

- Human, Mouse

Applications

- WB, ELISA

MW

- 29kD (Observed)

Isotype

- IgG

| Recommended Dilution Ratios

WB 1:500-2000

ELISA 1:5000-20000

| Storage

Storage* -15°C to -25°C/1 year (Do not lower than -25°C)

Formulation Liquid in PBS containing 50% glycerol, 0.5% BSA and 0.02% sodium azide.

| Basic Information

Clonality Polyclonal

| Immunogen Information

Immunogen Synthesized peptide derived from human protein . at AA range: 50-130

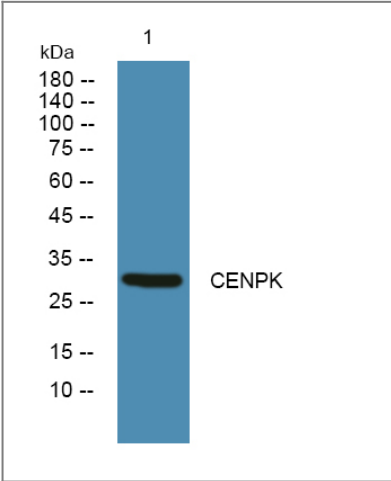
Specificity CENPK Polyclonal Antibody detects endogenous levels of protein.

| Target Information

Gene name CENPK ICEN37 FKSG14

Protein Name	Centromere protein K (CENP-K) (Interphase centromere complex protein 37) (Protein AF-5alpha) (p33)		
	Organism	Gene ID	UniProt ID
	Human	64105;	Q9BS16;
	Mouse		Q9ESN5;
Cellular Localization	Nucleus. Chromosome, centromere. Chromosome, centromere, kinetochore. Localizes exclusively in the centromeres. The CENPA-CAD complex is probably recruited on centromeres by the CENPA-NAC complex.		
Tissue specificity	Detected in several fetal organs with highest levels in fetal liver. In adults, it is weakly expressed in lung and placenta.		
Function	Disease:Chromosomal aberrations involving CENPK are a cause of acute leukemias. Translocation t(5;11)(q12;q23) with MLL.,Function:Component of the CENPA-CAD (nucleosome distal) complex, a complex recruited to centromeres which is involved in assembly of kinetochore proteins, mitotic progression and chromosome segregation. May be involved in incorporation of newly synthesized CENPA into centromeres via its interaction with the CENPA-NAC complex.,subcellular location:Localizes exclusively in the centromeres. The CENPA-CAD complex is probably recruited on centromeres by the CENPA-NAC complex.,subunit:Component of the CENPA-CAD complex, composed of CENPI, CENPK, CENPL, CENPO, CENPP, CENPQ, CENPR and CENPS. The CENPA-CAD complex interacts with the CENPA-NAC complex, at least composed of CENPA, CENPC, CENPH, CENPM, CENPN, CENPT and MLF1IP/CENPU.,tissue specificity:Detected in several fetal organs with highest levels in fetal liver. In adults, it is weakly expressed in lung and placenta.,		

| Validation Data



Western blot analysis of lysates from U2OS cells, primary antibody was diluted at 1:1000, 4°over night

| Contact information

Orders: order@immunoway.com
Support: tech@immunoway.com
Telephone: 877-594-3616 (Toll Free), 408-747-0185
Website: <http://www.immunoway.com>
Address: 2200 Ringwood Ave San Jose, CA 95131 USA



Please scan the QR code
to access additional
product information:
CENPK Rabbit pAb

For Research Use Only. Not for Use in Diagnostic Procedures.

[Antibody](#) | [ELISA Kits](#) | [Protein](#) | [Reagents](#)