

## ELOC Rabbit pAb

CatalogNo: YN0297

### Key Features

#### Host Species

- Rabbit

#### Reactivity

- Human, Mouse, Rat

#### Applications

- WB, ELISA

#### MW

- 12kD (Observed)

#### Isotype

- IgG

### Storage

**Storage\*** -15°C to -25°C/1 year (Do not lower than -25°C)

**Formulation** Liquid in PBS containing 50% glycerol, 0.5% BSA and 0.02% sodium azide.

### Recommended Dilution Ratios

**WB 1:500-2000**

**ELISA 1:5000-20000**

### Basic Information

**Clonality** Polyclonal

### Immunogen Information

**Immunogen** Synthesized peptide derived from human protein . at AA range: 40-120

**Specificity** ELOC Polyclonal Antibody detects endogenous levels of protein.

### Target Information

**Gene name** TCEB1

**Protein Name** Transcription elongation factor B polypeptide 1 (Elongin 15 kDa subunit) (Elongin-C) (EloC) (RNA polymerase II transcription factor SIII subunit C) (SIII p15)

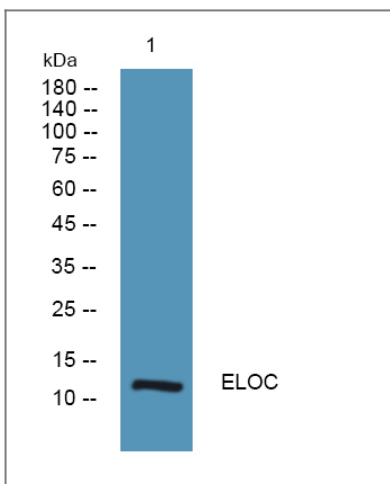
Organism	Gene ID	UniProt ID
Human	<a href="#">6921</a> ;	<a href="#">Q15369</a> ;
Mouse		<a href="#">P83940</a> ;
Rat		<a href="#">P83941</a> ;

**Cellular Localization** Nucleus .

**Tissue specificity** Overexpressed in prostate cancer cell line PC-3 and breast cancer cell line SK-BR-3.

**Function** Function:SIII, also known as elongin, is a general transcription elongation factor that increases the RNA polymerase II transcription elongation past template-encoded arresting sites. Subunit A is transcriptionally active and its transcription activity is strongly enhanced by binding to the dimeric complex of the SIII regulatory subunits B and C (elongin BC complex).,Function:The elongin BC complex seems to be involved as an adapter protein in the proteasomal degradation of target proteins via different E3 ubiquitin ligase complexes, including the von Hippel-Lindau ubiquitination complex CBC(VHL). By binding to BC-box motifs it seems to link target recruitment subunits, like VHL and members of the SOCS box family, to Cullin/RBX1 modules that activate E2 ubiquitination enzymes.,similarity:Belongs to the SKP1 family.,subunit:Heterotrimer of an A (A1, A2 or A3), B and C subunit. Part of E3 ubiquitin ligase complexes with CUL5 or CUL2, RBX1 and a substrate adapter protein that can be either SOCS1, TCEB3, VHL or WSB1 (By similarity). The elongin BC complex is part of a complex with hydroxylated HIF1A. Substrate adapter protein can be a viral protein such as HIV Vif. Interacts with VHL. Interacts with TMF1. Interacts with human respiratory syncytial virus (HRSV) protein NS1.,tissue specificity:Overexpressed in prostate cancer cell line PC-3 and breast cancer cell line SK-BR-3.,

## Validation Data



Western blot analysis of lysates from KB cells, primary antibody was diluted at 1:1000, 4° over night

## Contact information

Orders: order@immunoway.com  
Support: tech@immunoway.com  
Telephone: 877-594-3616 (Toll Free), 408-747-0185  
Website: http://www.immunoway.com  
Address: 2200 Ringwood Ave San Jose, CA 95131 USA



Please scan the QR code  
to access additional  
product information:  
**ELOC Rabbit pAb**

---

For Research Use Only. Not for Use in Diagnostic Procedures.

[Antibody](#) | [ELISA Kits](#) | [Protein](#) | [Reagents](#)