

SERPH Rabbit pAb

CatalogNo: YN0279

| Key Features

Host Species

- Rabbit

Reactivity

- Human, Mouse, Rat

Applications

- WB, ELISA

MW

- 45kD (Observed)

Isotype

- IgG

| Recommended Dilution Ratios

WB 1:500-2000

ELISA 1:5000-20000

| Storage

Storage* -15°C to -25°C/1 year (Do not lower than -25°C)

Formulation Liquid in PBS containing 50% glycerol, 0.5% BSA and 0.02% sodium azide.

| Basic Information

Clonality Polyclonal

| Immunogen Information

Immunogen Synthesized peptide derived from human protein . at AA range: 190-270

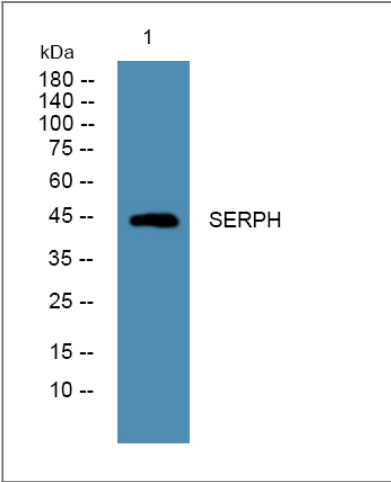
Specificity SERPH Polyclonal Antibody detects endogenous levels of protein.

| Target Information

Gene name SERPINH1 CBP1 CBP2 HSP47 SERPINH2 PIG14

Protein Name	Serpin H1 (47 kDa heat shock protein) (Arsenic-transactivated protein 3) (AsTP3) (Cell proliferation-inducing gene 14 protein) (Collagen-binding protein) (Colligin) (Rheumatoid arthritis-related antigen RA-A47)		
	Organism	Gene ID	UniProt ID
	Human	871 ;	P50454 ;
	Mouse		P19324 ;
	Rat		P29457 ;
Cellular Localization	Endoplasmic reticulum lumen.		
Tissue specificity	Brain, Cartilage, Fibroblast, Ovary, Periodontal ligament, Skin,		
Function	Function: Binds specifically to collagen. Could be involved as a chaperone in the biosynthetic pathway of collagen., induction: By heat shock., polymorphism: A functional SNP in the promoter of SERPINH1 is associated in African Americans with an increased risk for preterm premature rupture of membranes (PPROM) [MIM:610504]. PPRM is defined as rupture of the membranes before 37 weeks of gestation. SERPINH1 with the -656 T allele displays significantly reduced promoter activity compared to the major -656 C allele. Prematurity is correlated with an increased frequency of the -656 T allele., similarity: Belongs to the serpin family.,		

Validation Data



Western blot analysis of lysates from DU145 cells, primary antibody was diluted at 1:1000, 4° over night

Contact information

Orders: order@immunoway.com
Support: tech@immunoway.com
Telephone: 877-594-3616 (Toll Free), 408-747-0185
Website: <http://www.immunoway.com>
Address: 2200 Ringwood Ave San Jose, CA 95131 USA



Please scan the QR code
to access additional
product information:
SERPH Rabbit pAb

For Research Use Only. Not for Use in Diagnostic Procedures.

[Antibody](#) | [ELISA Kits](#) | [Protein](#) | [Reagents](#)