

## PDC10 Rabbit pAb

CatalogNo: YN0271 **Orthogonal Validated** 

### Key Features

#### Host Species

- Rabbit

#### Reactivity

- Human, Mouse, Rat

#### Applications

- WB, ELISA

#### MW

- 23kD (Observed)

#### Isotype

- IgG

### Storage

**Storage\*** -15°C to -25°C/1 year (Do not lower than -25°C)**Formulation** Liquid in PBS containing 50% glycerol, 0.5% BSA and 0.02% sodium azide.

### Recommended Dilution Ratios

**WB 1:500-2000****ELISA 1:5000-20000**

### Basic Information

**Clonality** Polyclonal

### Immunogen Information

**Immunogen** Synthesized peptide derived from human protein . at AA range: 40-120**Specificity** PDC10 Polyclonal Antibody detects endogenous levels of protein.

### Target Information

**Gene name** PDCD10 CCM3 TFAR15

**Protein Name** Programmed cell death protein 10 (Cerebral cavernous malformations 3 protein) (TF-1 cell apoptosis-related protein 15)

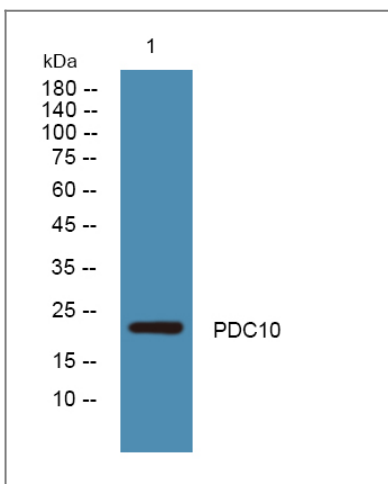
Organism	Gene ID	UniProt ID
Human	<a href="#">11235</a> ;	<a href="#">Q9BUL8</a> ;
Mouse		<a href="#">Q8VE70</a> ;
Rat		<a href="#">Q6NX65</a> ;

**Cellular Localization** Cytoplasm. Golgi apparatus membrane; Peripheral membrane protein; Cytoplasmic side. Cell membrane; Peripheral membrane protein; Cytoplasmic side. Partially co-localizes with endogenous PXN at the leading edges of migrating cells.

**Tissue specificity** Ubiquitous.

**Function** Disease:Defects in PDCD10 are the cause of cerebral cavernous malformations type 3 (CCM3) [MIM:603285]. Cerebral cavernous malformations (CCMs) are congenital vascular anomalies of the central nervous system that can result in hemorrhagic stroke, seizures, recurrent headaches, and focal neurologic deficits. CCMs have an incidence of 0.1%-0.5% in the general population and usually present clinically during the 3rd to 5th decade of life. The lesions are characterized by grossly enlarged blood vessels consisting of a single layer of endothelium and without any intervening neural tissue, ranging in diameter from a few millimeters to several centimeters.,Function:May play a role in apoptotic pathways.,similarity:Belongs to the PDCD10 family.,tissue specificity:Ubiquitous.,

## Validation Data



Western blot analysis of lysates from SW480 cells, primary antibody was diluted at 1:1000, 4°C over night

## Contact information

Orders: order@immunoway.com  
Support: tech@immunoway.com  
Telephone: 877-594-3616 (Toll Free), 408-747-0185  
Website: http://www.immunoway.com  
Address: 2200 Ringwood Ave San Jose, CA 95131 USA



Please scan the QR code  
to access additional  
product information:  
**PDC10 Rabbit pAb**

---

For Research Use Only. Not for Use in Diagnostic Procedures.

[Antibody](#) | [ELISA Kits](#) | [Protein](#) | [Reagents](#)