

MAGC3 Rabbit pAb

CatalogNo: YN0259

Key Features

Host Species

- Rabbit

Reactivity

- Human

Applications

- WB,ELISA

MW

- 70kD (Observed)

Isotype

- IgG

Recommended Dilution Ratios

WB 1:500-2000

ELISA 1:5000-20000

Storage

Storage* -15°C to -25°C/1 year(Do not lower than -25°C)

Formulation Liquid in PBS containing 50% glycerol,0.5% BSA and 0.02% sodium azide.

Basic Information

Clonality Polyclonal

Immunogen Information

Immunogen Synthesized peptide derived from human protein . at AA range: 60-140

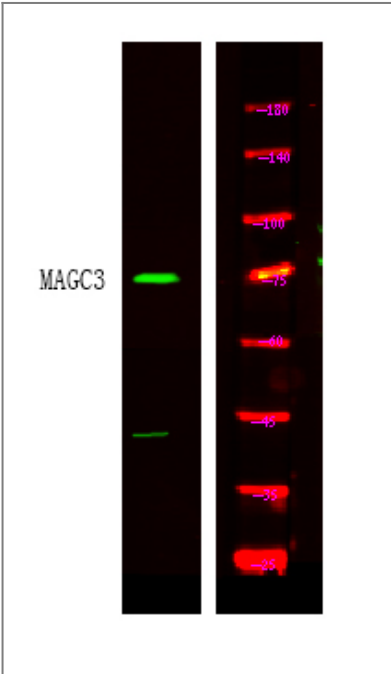
Specificity MAGC3 Polyclonal Antibody detects endogenous levels of protein.

Target Information

Gene name MAGEC3 HCA2

Protein Name	Melanoma-associated antigen C3 (Cancer/testis antigen 7.2) (CT7.2) (Hepatocellular carcinoma-associated antigen 2) (MAGE-C3 antigen)		
	Organism	Gene ID	UniProt ID
	Human	139081 ;	Q8TD91 ;
Tissue specificity	Expressed in testis. Not expressed in other normal tissues, but is expressed in tumors of different histological origins.		
Function	similarity:Contains 2 MAGE domains.,tissue specificity:Expressed in testis. Not expressed in other normal tissues, but is expressed in tumors of different histological origins.,		

| Validation Data



Western Blot analysis of HEK293 lysis, using primary antibody at 1:1000 dilution. Secondary antibody(catalog#:RS23920) was diluted at 1:10000

| Contact information

Orders: order@immunoway.com
 Support: tech@immunoway.com
 Telephone: 877-594-3616 (Toll Free), 408-747-0185
 Website: http://www.immunoway.com
 Address: 2200 Ringwood Ave San Jose, CA 95131 USA



Please scan the QR code to access additional product information:
MAGC3 Rabbit pAb