

K1H1 Rabbit pAb

CatalogNo: YN0244

| Key Features

Host Species

- Rabbit

Reactivity

- Human, Mouse

Applications

- WB, ELISA

MW

- 45kD (Observed)

Isotype

- IgG

| Recommended Dilution Ratios

WB 1:500-2000

ELISA 1:5000-20000

| Storage

Storage* -15°C to -25°C/1 year (Do not lower than -25°C)

Formulation Liquid in PBS containing 50% glycerol, and 0.02% sodium azide.

| Basic Information

Clonality Polyclonal

| Immunogen Information

Immunogen Synthesized peptide derived from human protein . at AA range: 10-90

Specificity K1H1 Polyclonal Antibody detects endogenous levels of protein.

| Target Information

Gene name KRT31 HHA1 HKA1 KRTHA1

Protein Name

Keratin, type I cuticular Ha1 (Hair keratin, type I Ha1) (Keratin-31) (K31)

Organism**Gene ID****UniProt ID**

Human

[3881;](#)[Q15323;](#)

Mouse

[Q61765;](#)**Cellular
Localization**

extracellular space,intermediate filament,extracellular exosome,

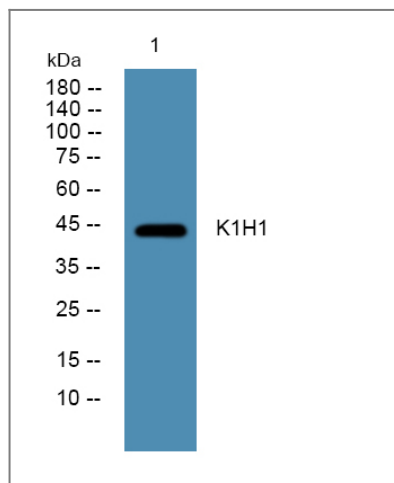
Tissue specificity

Present in scalp but not in hairless skin. Abundantly expressed in the differentiating cortex of growing (anagen) hair. Expression is restricted to the keratinocytes of the hair cortex and is absent from inner root sheath and medulla.

Function

miscellaneous:There are two types of hair/microfibrillar keratin, I (acidic) and II (neutral to basic).,similarity:Belongs to the intermediate filament family.,tissue specificity:Present in scalp but not in hairless skin. Abundantly expressed in the differentiating cortex of growing (anagen) hair. Expression is restricted to the keratinocytes of the hair cortex and is absent from inner root sheath and medulla.,

Validation Data



Western blot analysis of lysates from HCT116 cells, primary antibody was diluted at 1:1000, 4° over night

Contact information

Orders: order@immunoway.com
Support: tech@immunoway.com
Telephone: 877-594-3616 (Toll Free), 408-747-0185
Website: <http://www.immunoway.com>
Address: 2200 Ringwood Ave San Jose, CA 95131 USA



Please scan the QR code to access additional product information:
K1H1 Rabbit pAb

