

JAM3 Rabbit pAb

CatalogNo: YN0240

Key Features

Host Species

- Rabbit

Reactivity

- Human, Mouse, Rat

Applications

- WB, ELISA

MW

- 34kD (Observed)

Isotype

- IgG

Recommended Dilution Ratios

WB 1:500-2000

ELISA 1:5000-20000

Storage

Storage* -15°C to -25°C/1 year (Do not lower than -25°C)

Formulation Liquid in PBS containing 50% glycerol, and 0.02% sodium azide.

Basic Information

Clonality Polyclonal

Immunogen Information

Immunogen Synthesized peptide derived from human protein . at AA range: 60-140

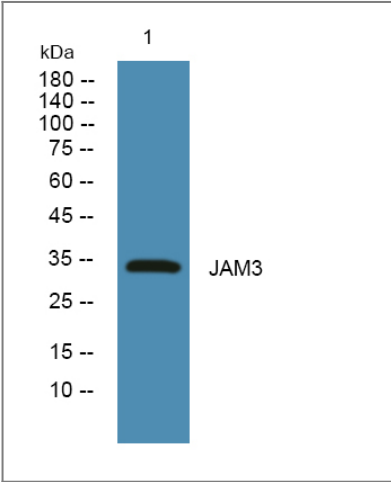
Specificity JAM3 Polyclonal Antibody detects endogenous levels of protein.

Target Information

Gene name JAM3 UNQ859/PRO1868

Protein Name	Junctional adhesion molecule C (JAM-C) (JAM-2) (Junctional adhesion molecule 3) (JAM-3)		
	Organism	Gene ID	UniProt ID
	Human	83700;	Q9BX67;
	Mouse		Q9D8B7;
	Rat		Q68FQ2;
Cellular Localization	Cell membrane ; Single-pass type I membrane protein . Cell junction . Cell junction, desmosome . Cell junction, tight junction . Detected in the acrosome region in developing spermatids (By similarity). In epithelial cells, it is expressed at desmosomes but not at tight junctions (PubMed:15194813). Localizes at the cell surface of endothelial cells; treatment of endothelial cells with vascular endothelial growth factor stimulates recruitment of JAM3 to cell-cell contacts (PubMed:15994945). . ; [Soluble form of JAM-C]: Secreted .		
Tissue specificity	Detected on round and elongated spermatids (at protein level) (PubMed:15372036). Highest expression in placenta, brain and kidney. Significant expression is detected on platelets. Expressed in intestinal mucosa cells. Expressed in the vascular endothelium. Found in serum (at protein level). Also detected in the synovial fluid of patients with rheumatoid arthritis, psoriatic arthritis or osteoarthritis (at protein level).		
Function	Function:May participate in cell-cell adhesion distinct from tight junctions.,similarity:Belongs to the immunoglobulin superfamily.,similarity:Contains 1 Ig-like C2-type (immunoglobulin-like) domain.,similarity:Contains 1 Ig-like V-type (immunoglobulin-like) domain.,subunit:Interacts with JAM2.,tissue specificity:Widely expressed. Highest expression in placenta, brain and kidney.,		

Validation Data



Western blot analysis of lysates from HCT116 cells, primary antibody was diluted at 1:1000, 4°over night

Contact information

Orders: order@immunoway.com
Support: tech@immunoway.com
Telephone: 877-594-3616 (Toll Free), 408-747-0185
Website: <http://www.immunoway.com>
Address: 2200 Ringwood Ave San Jose, CA 95131 USA



Please scan the QR code
to access additional
product information:
JAM3 Rabbit pAb

For Research Use Only. Not for Use in Diagnostic Procedures.

[Antibody](#) | [ELISA Kits](#) | [Protein](#) | [Reagents](#)