

INSL5 Rabbit pAb

CatalogNo: YN0234

Key Features

Host Species

- Rabbit

Reactivity

- Human, Mouse

Applications

- WB, ELISA

MW

- 14kD (Observed)

Isotype

- IgG

Recommended Dilution Ratios

WB 1:500-2000**ELISA 1:5000-20000**

Storage

Storage* -15°C to -25°C/1 year (Do not lower than -25°C)**Formulation** Liquid in PBS containing 50% glycerol, 0.5% BSA and 0.02% sodium azide.

Basic Information

Clonality Polyclonal

Immunogen Information

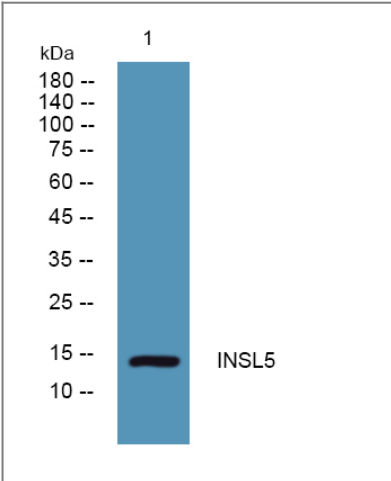
Immunogen Synthesized peptide derived from human protein . at AA range: 30-110**Specificity** INSL5 Polyclonal Antibody detects endogenous levels of protein.

Target Information

Gene name INSL5 UNQ156/PRO182

| | | | |
|------------------------------|--|-------------------------|--------------------------|
| Protein Name | Insulin-like peptide INSL5 (Insulin-like peptide 5) [Cleaved into: Insulin-like peptide INSL5 B chain; Insulin-like peptide INSL5 A chain] | | |
| | Organism | Gene ID | UniProt ID |
| | Human | 10022 ; | Q9Y5Q6 ; |
| | Mouse | | Q9WUG6 ; |
| Cellular Localization | Secreted. | | |
| Tissue specificity | Highly expressed in rectum with lower levels in uterus and ascending and descending colon. | | |
| Function | Function:May have a role in gut contractility or in thymic development and regulation.,similarity:Belongs to the insulin family.,subunit:Heterodimer of a B chain and an A chain linked by two disulfide bonds.,tissue specificity:Highly expressed in rectum with lower levels in uterus and ascending and descending colon., | | |

Validation Data



Western blot analysis of lysates from K562 cells, primary antibody was diluted at 1:1000, 4°over night

Contact information

Orders: order@immunoway.com
Support: tech@immunoway.com
Telephone: 877-594-3616 (Toll Free), 408-747-0185
Website: http://www.immunoway.com
Address: 2200 Ringwood Ave San Jose, CA 95131 USA



Please scan the QR code to access additional product information:
INSL5 Rabbit pAb