

## IFNA7 Rabbit pAb

CatalogNo: YN0222

### Key Features

#### Host Species

- Rabbit

#### Reactivity

- Human, Mouse

#### Applications

- WB, ELISA

#### MW

- 20kD (Observed)

#### Isotype

- IgG

### Recommended Dilution Ratios

**WB 1:500-2000**

**ELISA 1:5000-20000**

### Storage

**Storage\*** -15°C to -25°C/1 year (Do not lower than -25°C)

**Formulation** Liquid in PBS containing 50% glycerol, and 0.02% sodium azide.

### Basic Information

**Clonality** Polyclonal

### Immunogen Information

**Immunogen** Synthesized peptide derived from human protein . at AA range: 1-80

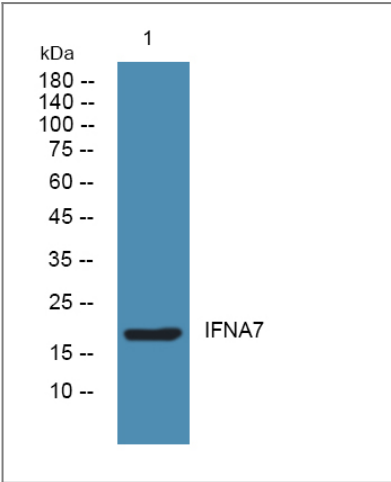
**Specificity** IFNA7 Polyclonal Antibody detects endogenous levels of protein.

### Target Information

**Gene name** IFNA7

<b>Protein Name</b>	Interferon alpha-7 (IFN-alpha-7) (Interferon alpha-J) (LeIF J) (Interferon alpha-J1) (IFN-alpha-J1)		
	<b>Organism</b>	<b>Gene ID</b>	<b>UniProt ID</b>
	Human	<a href="#">3444;</a>	<a href="#">P01567;</a>
	Mouse		<a href="#">P06799;</a>
<b>Cellular Localization</b>	Secreted.		
<b>Tissue specificity</b>	Brain,PCR rescued clones,		
<b>Function</b>	Function:Produced by macrophages, IFN-alpha have antiviral activities. Interferon stimulates the production of two enzymes: a protein kinase and an oligoadenylate synthetase.,similarity:Belongs to the alpha/beta interferon family.,		

## Validation Data



Western blot analysis of lysates from K562 cells, primary antibody was diluted at 1:1000, 4°over night

## Contact information

Orders: [order@immunoway.com](mailto:order@immunoway.com)  
 Support: [tech@immunoway.com](mailto:tech@immunoway.com)  
 Telephone: 877-594-3616 (Toll Free), 408-747-0185  
 Website: <http://www.immunoway.com>  
 Address: 2200 Ringwood Ave San Jose, CA 95131 USA



Please scan the QR code to access additional product information:  
**IFNA7 Rabbit pAb**