

## IFNA5 Rabbit pAb

CatalogNo: YN0220

### Key Features

#### Host Species

- Rabbit

#### Reactivity

- Human, Mouse

#### Applications

- WB, ELISA

#### MW

- 20kD (Observed)

#### Isotype

- IgG

### Recommended Dilution Ratios

WB 1:500-2000

ELISA 1:5000-20000

### Storage

**Storage\*** -15°C to -25°C/1 year (Do not lower than -25°C)

**Formulation** Liquid in PBS containing 50% glycerol, and 0.02% sodium azide.

### Basic Information

**Clonality** Polyclonal

### Immunogen Information

**Immunogen** Synthesized peptide derived from human protein . at AA range: 30-110

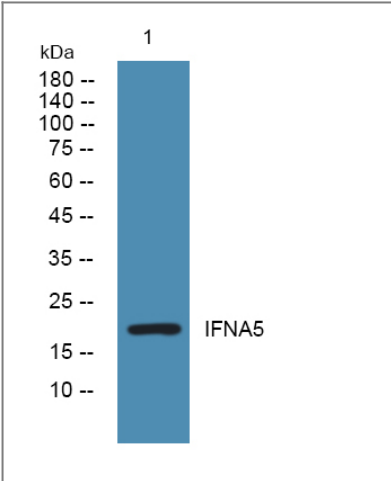
**Specificity** IFNA5 Polyclonal Antibody detects endogenous levels of protein.

### Target Information

**Gene name** IFNA5

Protein Name	Interferon alpha-5 (IFN-alpha-5) (Interferon alpha-61) (Interferon alpha-G) (LeIF G)		
	Organism	Gene ID	UniProt ID
	Human	<a href="#">3442;</a>	<a href="#">P01569;</a>
	Mouse		<a href="#">P07349;</a>
Cellular Localization	Secreted.		
Tissue specificity	Brain,Spleen,		
Function	Function:Produced by macrophages, IFN-alpha have antiviral activities. Interferon stimulates the production of two enzymes: a protein kinase and an oligoadenylate synthetase.,similarity:Belongs to the alpha/beta interferon family.,		

| Validation Data



Western blot analysis of lysates from Jurkat cells, primary antibody was diluted at 1:1000, 4°over night

| Contact information

Orders: order@immunoway.com  
 Support: tech@immunoway.com  
 Telephone: 877-594-3616 (Toll Free), 408-747-0185  
 Website: http://www.immunoway.com  
 Address: 2200 Ringwood Ave San Jose, CA 95131 USA



Please scan the QR code  
 to access additional  
 product information:  
**IFNA5 Rabbit pAb**