

## FAT1 Rabbit pAb

CatalogNo: YN0197

### Key Features

#### Host Species

- Rabbit

#### Reactivity

- Human

#### Applications

- IHC,IF

#### MW

- 504kD (Observed)

#### Isotype

- IgG

### Recommended Dilution Ratios

IHC 1:50-300

IF 1:50-200

### Storage

**Storage\*** -15°C to -25°C/1 year(Do not lower than -25°C)

**Formulation** Liquid in PBS containing 50% glycerol,0.5% BSA and 0.02% sodium azide.

### Basic Information

**Clonality** Polyclonal

### Immunogen Information

**Immunogen** Synthesized peptide derived from human protein . at AA range: 1140-1220

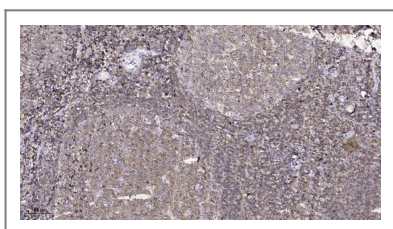
**Specificity** FAT1 Polyclonal Antibody detects endogenous levels of protein.

### Target Information

**Gene name** FAT1 CDHF7 FAT

<b>Protein Name</b>	Protocadherin Fat 1 (Cadherin family member 7) (Cadherin-related tumor suppressor homolog) (Protein fat homolog) [Cleaved into: Protocadherin Fat 1, nuclear form]		
	<b>Organism</b>	<b>Gene ID</b>	<b>UniProt ID</b>
	Human	<a href="#">2195;</a>	<a href="#">Q14517;</a>
<b>Cellular Localization</b>	[Protocadherin Fat 1]: Cell membrane ; Single-pass type I membrane protein .; [Protocadherin Fat 1, nuclear form]: Nucleus .		
<b>Tissue specificity</b>	Expressed in many epithelial and some endothelial and smooth muscle cells.		
<b>Function</b>	Function:Could function as a cell-adhesion protein.,PTM:Phosphorylated upon DNA damage, probably by ATM or ATR.,similarity:Contains 1 laminin G-like domain.,similarity:Contains 34 cadherin domains.,similarity:Contains 5 EGF-like domains.,tissue specificity:Expressed in many epithelial and some endothelial and smooth muscle cells.,		

## Validation Data



Immunohistochemical analysis of paraffin-embedded human tonsil. 1, Antibody was diluted at 1:200(4° overnight). 2, Tris-EDTA,pH9.0 was used for antigen retrieval. 3,Secondary antibody was diluted at 1:200(room temperature, 45min).

## Contact information

Orders: [order@immunoway.com](mailto:order@immunoway.com)  
 Support: [tech@immunoway.com](mailto:tech@immunoway.com)  
 Telephone: 877-594-3616 (Toll Free), 408-747-0185  
 Website: <http://www.immunoway.com>  
 Address: 2200 Ringwood Ave San Jose, CA 95131 USA



Please scan the QR code to access additional product information:  
**FAT1 Rabbit pAb**

For Research Use Only. Not for Use in Diagnostic Procedures.

[Antibody](#) | [ELISA Kits](#) | [Protein](#) | [Reagents](#)