

## MAFB Rabbit pAb

CatalogNo: YN0164

### Key Features

#### Host Species

- Rabbit

#### Reactivity

- Human, Mouse, Rat

#### Applications

- WB, ELISA

#### MW

- 35kD (Observed)

#### Isotype

- IgG

### Recommended Dilution Ratios

WB 1:500-2000

ELISA 1:5000-20000

### Storage

**Storage\*** -15°C to -25°C/1 year (Do not lower than -25°C)

**Formulation** Liquid in PBS containing 50% glycerol, 0.5% BSA and 0.02% sodium azide.

### Basic Information

**Clonality** Polyclonal

### Immunogen Information

**Immunogen** Synthesized peptide derived from human protein . at AA range: 180-260

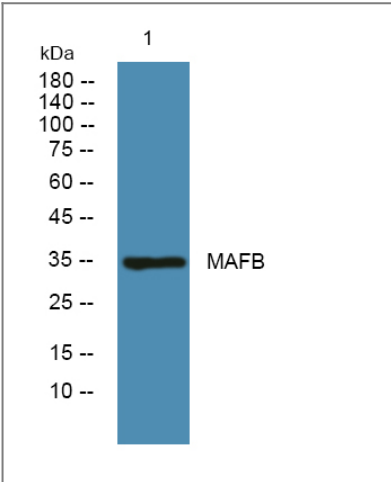
**Specificity** MAFB Polyclonal Antibody detects endogenous levels of protein.

### Target Information

**Gene name** MAFB KRML

|                       |   |                       |                         |
|-----------------------|---|-----------------------|-------------------------|
| Protein Name          | Transcription factor MafB (Maf-B) (V-maf musculoaponeurotic fibrosarcoma oncogene homolog B)  |                       |                         |
|                       | Organism  | Gene ID               | UniProt ID              |
|                       | Human   | <a href="#">9935;</a> | <a href="#">Q9Y5Q3;</a> |
|                       | Mouse   |                       | <a href="#">P54841;</a> |
|                       | Rat   |                       | <a href="#">P54842;</a> |
| Cellular Localization | Nucleus .   |                       |                         |
| Tissue specificity    | Ubiquitous.   |                       |                         |
| Function              | <p>Domain:The leucine-zipper domain is involved in the interaction with LRPICD.,Function:Acts as a transcriptional activator or repressor. Plays a pivotal role in regulating lineage-specific hematopoiesis by repressing ETS1-mediated transcription of erythroid-specific genes in myeloid cells. Required for monocytic, macrophage, podocyte and islet beta cell differentiation. Involved in renal tubule survival and F4/80 maturation. Activates the insulin and glucagon promoters. Together with PAX6, transactivates weakly the glucagon gene promoter through the G1 element. SUMO modification controls its transcriptional activity and ability to specify macrophage fate. Binds element G1 on the glucagon promoter (By similarity). Involved either as an oncogene or as a tumor suppressor, depending on the cell context.,PTM:Phosphorylated by GSK3 and MAPK13 on serine and threonine residues.,PTM:Sumoylated. Sumoylation on Lys-32 and Lys-297 stimulates its transcriptional repression activity and promotes macrophage differentiation from myeloid progenitors.,similarity:Belongs to the bZIP family. Maf subfamily.,similarity:Contains 1 bZIP domain.,subunit:Homodimer or heterodimer with other bHLH-Zip transcription factors. Binds DNA as a homodimer or a heterodimer. Forms homo- and heterodimers with FOS, FOSB and FOSL2, but not with JUN proteins (JUN, JUNB and JUND). Interacts with PAX6; the interaction is direct. Interacts with ETS1 and LRP1 (By similarity). Interacts with the intracellular cytoplasmic domain of LRP1 (LRPICD); the interaction results in a moderate reduction of MAFB transcriptional potential.,tissue specificity:Ubiquitous.,</p> |                       |                         |

| Validation Data



Western blot analysis of lysates from U2OS cells, primary antibody was diluted at 1:1000, 4°over night

## | Contact information

Orders: order@immunoway.com  
Support: tech@immunoway.com  
Telephone: 877-594-3616 (Toll Free), 408-747-0185  
Website: <http://www.immunoway.com>  
Address: 2200 Ringwood Ave San Jose, CA 95131 USA



Please scan the QR code  
to access additional  
product information:  
**MAFB Rabbit pAb**

---

For Research Use Only. Not for Use in Diagnostic Procedures.

[Antibody](#) | [ELISA Kits](#) | [Protein](#) | [Reagents](#)