

CT47A Rabbit pAb

CatalogNo: YN0124

Key Features

Host Species

- Rabbit

Reactivity

- Human

Applications

- WB,ELISA

MW

- 31kD (Observed)

Isotype

- IgG

Storage

Storage* -15°C to -25°C/1 year(Do not lower than -25°C)**Formulation** Liquid in PBS containing 50% glycerol,0.5% BSA and 0.02% sodium azide.

Recommended Dilution Ratios

WB 1:500-2000**ELISA 1:5000-20000**

Basic Information

Clonality Polyclonal

Immunogen Information

Immunogen Synthesized peptide derived from human protein . at AA range: 210-290**Specificity** CT47A Polyclonal Antibody detects endogenous levels of protein.

Target Information

Gene name CT47A1 CT47.1; CT47A2 CT47.2; CT47A3 CT47.3; CT47A4 CT47.4; CT47A5 CT47.5; CT47A6 CT47.6; CT47A7 CT47.7; CT47A8 CT47.8; CT47A9 CT47.9; CT47A10 CT47.10; CT47A11 CT47.11; CT47A12 CT47.12

Protein Name Cancer/testis antigen 47A (Cancer/testis antigen 47) (CT47)

Organism

Gene ID

UniProt ID

Human

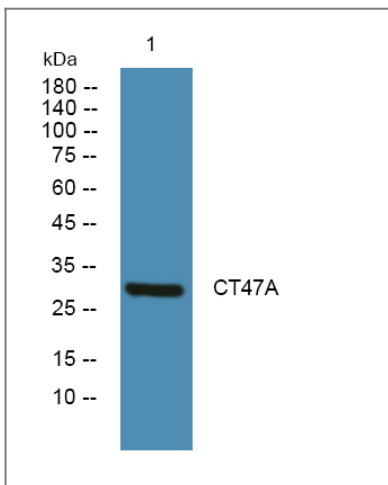
[100507170](#);

[Q5JQC4](#);

Tissue specificity Strongly expressed in testis, low expression in placenta, and very low expression in brain.

Function tissue specificity:Strongly expressed in testis, low expression in placenta, and very low expression in brain.,

Validation Data



Western blot analysis of lysates from A431 cells, primary antibody was diluted at 1:1000, 4°over night

Contact information

Orders: order@immunoway.com
Support: tech@immunoway.com
Telephone: 877-594-3616 (Toll Free), 408-747-0185
Website: <http://www.immunoway.com>
Address: 2200 Ringwood Ave San Jose, CA 95131 USA



Please scan the QR code to access additional product information:
CT47A Rabbit pAb

For Research Use Only. Not for Use in Diagnostic Procedures.

[Antibody](#) | [ELISA Kits](#) | [Protein](#) | [Reagents](#)