

FHL3 Rabbit pAb

CatalogNo: YN0113

Key Features

Host Species

- Rabbit

Reactivity

- Human, Mouse

Applications

- WB, ELISA

MW

- 30kD (Observed)

Isotype

- IgG

Recommended Dilution Ratios

WB 1:500-2000

ELISA 1:5000-20000

Storage

Storage* -15°C to -25°C/1 year (Do not lower than -25°C)

Formulation Liquid in PBS containing 50% glycerol, and 0.02% sodium azide.

Basic Information

Clonality Polyclonal

Immunogen Information

Immunogen Synthesized peptide derived from human protein . at AA range: 40-120

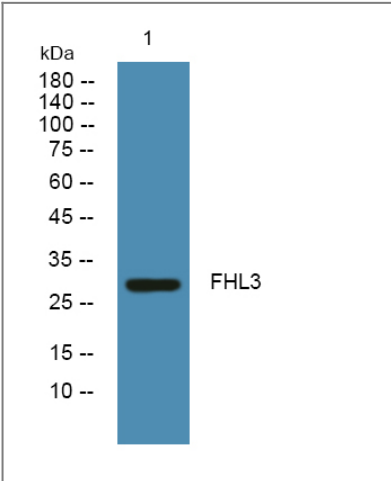
Specificity FHL3 Polyclonal Antibody detects endogenous levels of protein.

Target Information

Gene name FHL3 SLIM2

Protein Name	Four and a half LIM domains protein 3 (FHL-3) (Skeletal muscle LIM-protein 2) (SLIM-2)		
	Organism	Gene ID	UniProt ID
	Human	2275;	Q13643;
	Mouse		Q9R059;
Cellular Localization	Nucleus . Cytoplasm .		
Tissue specificity	Expressed only in skeletal muscle.		
Function	similarity:Contains 3 LIM zinc-binding domains.,similarity:Contains 4 LIM zinc-binding domains.,tissue specificity:Expressed only in skeletal muscle.,		

Validation Data



Western blot analysis of lysates from SH-SY5Y cells, primary antibody was diluted at 1:1000, 4°over night

Contact information

Orders: order@immunoway.com
Support: tech@immunoway.com
Telephone: 877-594-3616 (Toll Free), 408-747-0185
Website: http://www.immunoway.com
Address: 2200 Ringwood Ave San Jose, CA 95131 USA



Please scan the QR code to access additional product information:
FHL3 Rabbit pAb