

RT11 Rabbit pAb

CatalogNo: YN0100

Key Features

Host Species

- Rabbit

Reactivity

- Human, Mouse

Applications

- WB, ELISA

MW

- 21kD (Observed)

Isotype

- IgG

Recommended Dilution Ratios

WB 1:500-2000

ELISA 1:5000-20000

Storage

Storage* -15°C to -25°C/1 year (Do not lower than -25°C)

Formulation Liquid in PBS containing 50% glycerol, 0.5% BSA and 0.02% sodium azide.

Basic Information

Clonality Polyclonal

Immunogen Information

Immunogen Synthesized peptide derived from human protein . at AA range: 10-90

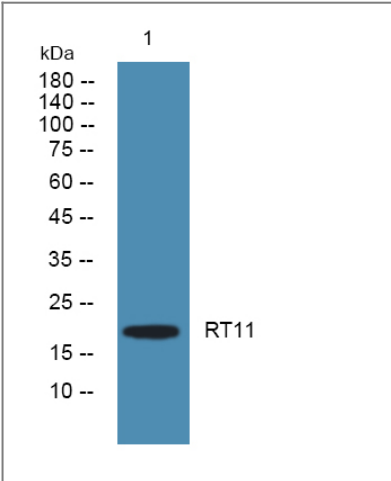
Specificity RT11 Polyclonal Antibody detects endogenous levels of protein.

Target Information

Gene name MRPS11 RPMS11 HCC2

Protein Name	28S ribosomal protein S11, mitochondrial (MRP-S11) (S11mt) (Cervical cancer proto-oncogene 2 protein) (HCC-2)		
	Organism	Gene ID	UniProt ID
	Human	64963 ;	P82912 ;
	Mouse		Q9DCA2 ;
Cellular Localization	Mitochondrion .		
Tissue specificity	Cervix,Human lung,Kidney,Muscle,		
Function	Alternative products:Experimental confirmation may be lacking for some isoforms,similarity:Belongs to the ribosomal protein S11P family.,subunit:Component of the mitochondrial ribosome small subunit (28S) which comprises a 12S rRNA and about 30 distinct proteins.,		

| Validation Data



Western blot analysis of lysates from SW480 cells, primary antibody was diluted at 1:1000, 4°over night

| Contact information

Orders: order@immunoway.com
 Support: tech@immunoway.com
 Telephone: 877-594-3616 (Toll Free), 408-747-0185
 Website: <http://www.immunoway.com>
 Address: 2200 Ringwood Ave San Jose, CA 95131 USA



Please scan the QR code
 to access additional
 product information:
RT11 Rabbit pAb