

## DUS14 Rabbit pAb

CatalogNo: YN0086

### Key Features

#### Host Species

- Rabbit

#### Reactivity

- Human, Mouse

#### Applications

- WB, ELISA

#### MW

- 21kD (Observed)

#### Isotype

- IgG

### Recommended Dilution Ratios

**WB 1:500-2000**

**ELISA 1:5000-20000**

### Storage

**Storage\*** -15°C to -25°C/1 year (Do not lower than -25°C)

**Formulation** Liquid in PBS containing 50% glycerol, and 0.02% sodium azide.

### Basic Information

**Clonality** Polyclonal

### Immunogen Information

**Immunogen** Synthesized peptide derived from human protein . at AA range: 120-200

**Specificity** DUS14 Polyclonal Antibody detects endogenous levels of protein.

### Target Information

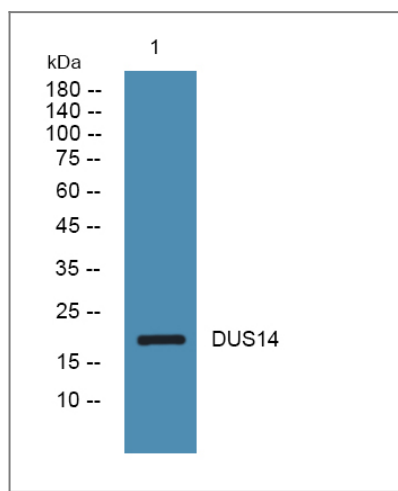
**Gene name** DUSP14 MKP6

<b>Protein Name</b>	Dual specificity protein phosphatase 14 (MKP-1-like protein tyrosine phosphatase) (MKP-L) (Mitogen-activated protein kinase phosphatase 6) (MAP kinase phosphatase 6) (MKP-6)		
	<b>Organism</b>	<b>Gene ID</b>	<b>UniProt ID</b>
	Human	<a href="#">11072;</a>	<a href="#">Q95147;</a>
	Mouse		<a href="#">Q9JLY7;</a>

**Tissue specificity** Lung,

**Function** Catalytic activity:A phosphoprotein + H(2)O = a protein + phosphate.,Catalytic activity:Protein tyrosine phosphate + H(2)O = protein tyrosine + phosphate.,Function:Involved in the inactivation of MAP kinases. Dephosphorylates ERK, JNK and p38 MAP-kinases.,similarity:Belongs to the protein-tyrosine phosphatase family. Non-receptor class dual specificity subfamily.,similarity:Contains 1 tyrosine-protein phosphatase domain.,subunit:Interacts with CD28.,

## Validation Data



Western blot analysis of lysates from DU145 cells, primary antibody was diluted at 1:1000, 4°over night

## Contact information

Orders: order@immunoway.com  
Support: tech@immunoway.com  
Telephone: 877-594-3616 (Toll Free), 408-747-0185  
Website: http://www.immunoway.com  
Address: 2200 Ringwood Ave San Jose, CA 95131 USA



Please scan the QR code to access additional product information:  
**DUS14 Rabbit pAb**