

AP2M1 Rabbit pAb

CatalogNo: YN0052

Key Features

Host Species

- Rabbit

Reactivity

- Human, Mouse, Rat

Applications

- WB, ELISA

MW

- 47kD (Observed)

Isotype

- IgG

Recommended Dilution Ratios

WB 1:500-2000

ELISA 1:5000-20000

Storage

Storage* -15°C to -25°C/1 year (Do not lower than -25°C)

Formulation Liquid in PBS containing 50% glycerol, 0.5% BSA and 0.02% sodium azide.

Basic Information

Clonality Polyclonal

Immunogen Information

Immunogen Synthesized peptide derived from human protein . at AA range: 100-180

Specificity AP2M1 Polyclonal Antibody detects endogenous levels of protein.

Target Information

Gene name AP2M1 CLAPM1 KIAA0109

Protein Name AP-2 complex subunit mu (AP-2 mu chain) (Adapter-related protein complex 2 mu subunit) (Adaptin-mu2) (Adaptor protein complex AP-2 subunit mu) (Clathrin assembly protein complex 2 medium chain) (Clathrin coat assembly protein AP50) (Clathrin coat-associated protein AP50) (HA2 50 kDa subunit) (Plasma membrane adaptor AP-2 50 kDa protein)

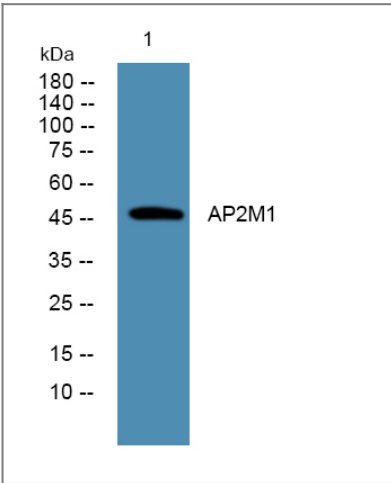
Organism	Gene ID	UniProt ID
Human	1173 ;	Q96CW1 ;
Mouse		P84091 ;
Rat		P84092 ;

Cellular Localization Cell membrane . Membrane, coated pit ; Peripheral membrane protein; Cytoplasmic side. AP-2 appears to be excluded from internalizing CCVs and to disengage from sites of endocytosis seconds before internalization of the nascent CCV. .

Tissue specificity Expressed in the brain (at protein level).

Function Function:Component of the adaptor complexes which link clathrin to receptors in coated vesicles. Clathrin-associated protein complexes are believed to interact with the cytoplasmic tails of membrane proteins, leading to their selection and concentration. AP50 is a subunit of the plasma membrane adaptor. The complex binds polyphosphoinositide-containing lipids.,PTM:Phosphorylated.,similarity:Belongs to the adaptor complexes medium subunit family.,similarity:Contains 1 MHD (mu homology) domain.,subcellular location:Component of the coat surrounding the cytoplasmic face of coated vesicles in the plasma membrane.,subunit:Adaptor protein complex 2 (AP-2) is an heterotetramer composed of two large adaptins (alpha-type subunit AP2A1 or AP2A2 and beta-type subunit AP2B1), a medium adaptin (mu-type subunit AP2M1) and a small adaptin (sigma-type subunit AP2S1). Interacts with ATP6V1H and MEGF10.,

Validation Data



Western blot analysis of lysates from K562 cells, primary antibody was diluted at 1:1000, 4°over night

Contact information

Orders: order@immunoway.com
Support: tech@immunoway.com
Telephone: 877-594-3616 (Toll Free), 408-747-0185
Website: http://www.immunoway.com
Address: 2200 Ringwood Ave San Jose, CA 95131 USA



Please scan the QR code
to access additional
product information:
AP2M1 Rabbit pAb

For Research Use Only. Not for Use in Diagnostic Procedures.

[Antibody](#) | [ELISA Kits](#) | [Protein](#) | [Reagents](#)