

CLSPN Rabbit pAb

CatalogNo: YN0025

Key Features

Host Species

- Rabbit

Reactivity

- Human, Mouse

Applications

- WB, ELISA

MW

- 147kD (Observed)

Isotype

- IgG

Storage

Storage* -15°C to -25°C/1 year (Do not lower than -25°C)**Formulation** Liquid in PBS containing 50% glycerol, 0.5% BSA and 0.02% sodium azide.

Recommended Dilution Ratios

WB 1:500-2000**ELISA 1:5000-20000**

Basic Information

Clonality Polyclonal

Immunogen Information

Immunogen Synthesized peptide derived from human protein . at AA range: 10-90**Specificity** CLSPN Polyclonal Antibody detects endogenous levels of protein.

Target Information

Gene name CLSPN

Protein Name

Claspin (hClaspin)

Organism**Gene ID****UniProt ID**

Human

[63967;](#)[Q9HAW4;](#)

Mouse

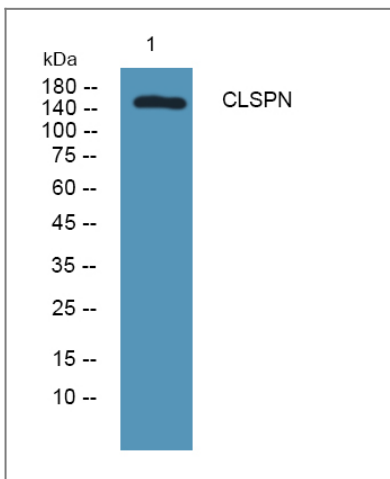
[269582;](#)[Q80YR7;](#)**Cellular Localization**

Nucleus .

Tissue specificity Bone marrow,Epithelium,PCR rescued clones,Skin,**Function**

Domain:The C-terminus of the protein contains 3 potential CHEK1-binding motifs (CKB motifs). Potential phosphorylation sites within CKB motif 1 and CKB motif 2 are required for interaction with CHEK1.,Function:Required for checkpoint mediated cell cycle arrest in response to inhibition of DNA replication or to DNA damage induced by both ionizing and UV irradiation. Adapter protein which binds to BRCA1 and the checkpoint kinase CHEK1 and facilitates the ATR-dependent phosphorylation of both proteins. Can also bind specifically to branched DNA structures and may associate with S-phase chromatin following formation of the pre-replication complex (pre-RC). This may indicate a role for this protein as a sensor which monitors the integrity of DNA replication forks.,induction:Expression peaks at S/G2 phases of the cell cycle.,PTM:Phosphorylated during activation of DNA replication or DNA damage checkpoints. This requires ATR.,sequence Caution:Contaminating sequence. Potential poly-A sequence.,similarity:Belongs to the claspin family.,subunit:Interacts with CHEK1 when phosphorylated. Interacts with ATR and RAD9A and these interactions are slightly reduced during checkpoint activation. Interacts with BRCA1 and this interaction increases during checkpoint activation. Interacts with TIMELESS.,

Validation Data



Western blot analysis of lysates from HCT116 cells, primary antibody was diluted at 1:1000, 4° over night

Contact information

Orders: order@immunoway.com
Support: tech@immunoway.com
Telephone: 877-594-3616 (Toll Free), 408-747-0185
Website: http://www.immunoway.com
Address: 2200 Ringwood Ave San Jose, CA 95131 USA



Please scan the QR code
to access additional
product information:
CLSPN Rabbit pAb

For Research Use Only. Not for Use in Diagnostic Procedures.

[Antibody](#) | [ELISA Kits](#) | [Protein](#) | [Reagents](#)