

HIPK1 Rabbit pAb

CatalogNo: YN0007

| Key Features

Host Species

- Rabbit

Reactivity

- Human, Mouse, Rat

Applications

- WB, ELISA

MW

- 133kD (Observed)

Isotype

- IgG

| Recommended Dilution Ratios

WB 1:500-2000

ELISA 1:5000-20000

| Storage

Storage* -15°C to -25°C/1 year (Do not lower than -25°C)

Formulation Liquid in PBS containing 50% glycerol, 0.5% BSA and 0.02% sodium azide.

| Basic Information

Clonality Polyclonal

| Immunogen Information

Immunogen Synthesized peptide derived from human protein . at AA range: 290-370

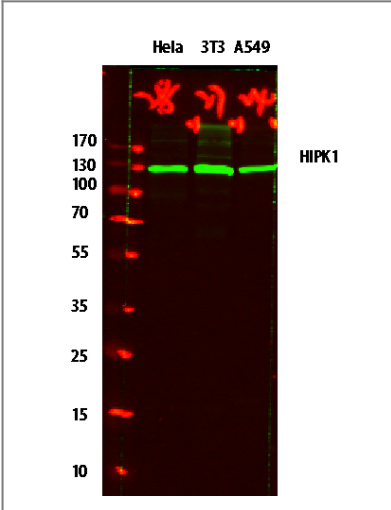
Specificity HIPK1 Polyclonal Antibody detects endogenous levels of protein.

| Target Information

Gene name HIPK1 KIAA0630 MYAK NBAK2

Protein Name	Homeodomain-interacting protein kinase 1 (Nuclear body-associated kinase 2)		
	Organism	Gene ID	UniProt ID
	Human	204851 ;	Q86Z02 ;
	Mouse		O88904 ;
	Rat		A4L9P5 ;
Cellular Localization	Nucleus . Cytoplasm . Nucleus speckle . Predominantly nuclear. Translocates from nucleus to cytoplasm in response to stress stimuli via SENP1-mediated desumoylation. .		
Tissue specificity	Ubiquitously expressed with highest levels in skeletal muscle and heart. Overexpressed in breast cancer cell lines. Isoform 2 is highly expressed in testis. Expressed in both androgen-dependent and androgen-independent prostate cancer cells (PubMed:28289210).		
Function	Catalytic activity:ATP + a protein = ADP + a phosphoprotein.,Function:May play a role as a corepressor for homeodomain transcription factors. Phosphorylates DAXX in response to stress, and mediates its translocation from the nucleus to the cytoplasm. May be involved in malignant squamous cell tumor formation.,PTM:Autophosphorylated. Phosphorylated and activated by JNK1.,similarity:Belongs to the protein kinase superfamily.,similarity:Belongs to the protein kinase superfamily. CMGC Ser/Thr protein kinase family. HIPK subfamily.,similarity:Contains 1 protein kinase domain.,subcellular location:Predominantly nuclear.,subunit:Interacts with Nkx1-2 and Nkx2-5 (By similarity). Interacts with DAXX and TP53.,tissue specificity:Ubiquitously expressed with highest levels in skeletal muscle and heart. Overexpressed in breast cancer cell lines.,		

| Validation Data



| Contact information

Orders: order@immunoway.com
Support: tech@immunoway.com
Telephone: 877-594-3616 (Toll Free), 408-747-0185
Website: <http://www.immunoway.com>
Address: 2200 Ringwood Ave San Jose, CA 95131 USA



Please scan the QR code
to access additional
product information:
HIPK1 Rabbit pAb

For Research Use Only. Not for Use in Diagnostic Procedures.

[Antibody](#) | [ELISA Kits](#) | [Protein](#) | [Reagents](#)