

KKCC1 Rabbit pAb

CatalogNo: YN0004

Key Features

Host Species

- Rabbit

Reactivity

- Human, Mouse, Rat

Applications

- WB, ELISA

MW

- 55kD (Observed)

Isotype

- IgG

Recommended Dilution Ratios

WB 1:500-2000

ELISA 1:5000-20000

Storage

Storage* -15°C to -25°C/1 year (Do not lower than -25°C)

Formulation Liquid in PBS containing 50% glycerol, 0.5% BSA and 0.02% sodium azide.

Basic Information

Clonality Polyclonal

Immunogen Information

Immunogen Synthesized peptide derived from human protein . at AA range: 400-480

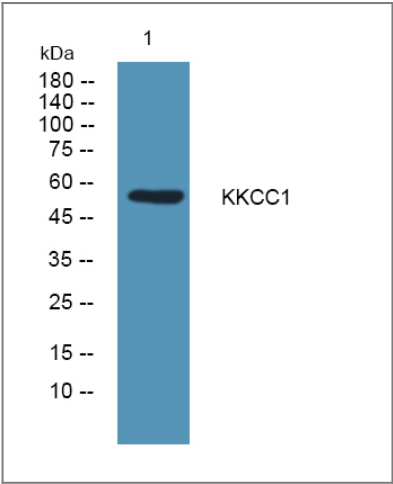
Specificity KKCC1 Polyclonal Antibody detects endogenous levels of protein.

Target Information

Gene name CAMKK1 CAMKKA

Protein Name	Calcium/calmodulin-dependent protein kinase kinase 1 (CaM-KK 1) (CaM-kinase kinase 1) (CaMKK 1) (CaM-kinase IV kinase) (Calcium/calmodulin-dependent protein kinase kinase alpha) (CaM-KK alpha) (CaM-kinase kinase alpha) (CaMKK alpha)		
	Organism	Gene ID	UniProt ID
	Human	84254;	Q8N5S9;
	Mouse	55984;	Q8VBY2;
	Rat	60341;	P97756;
Cellular Localization	Cytoplasm . Nucleus .		
Tissue specificity	Amygdala,Brain,		
Function	Catalytic activity:ATP + a protein = ADP + a phosphoprotein.,Domain:The autoinhibitory domain overlaps with the calmodulin binding region and may be involved in intrasteric autoinhibition.,Domain:The RP domain (arginine/proline-rich) is involved in the recognition of CAMKI and CAMK4 as substrates.,enzyme regulation:Activated by Ca(2+)/calmodulin. Binding of calmodulin may release intrasteric autoinhibition. Partially inhibited upon phosphorylation by PRCACA/PKA (By similarity). May be regulated through phosphorylation by CAMK1 and CAMK4.,Function:Calcium/calmodulin-dependent protein kinase that belongs to a proposed calcium-triggered signaling cascade involved in a number of cellular processes. Phosphorylates CAMK1, CAMK1D, CAMK1G and CAMK4. Involved in regulating cell apoptosis. Promotes cell survival by phosphorylating AKT1/PKB that inhibits pro-apoptotic BAD/Bcl2-antagonist of cell death.,PTM:Appears to be autophosphorylated in a Ca(2+)/calmodulin-dependent manner. Phosphorylated at multiple sites by PRCACA/PKA. Phosphorylation of Ser-458 is blocked upon binding to Ca(2+)/calmodulin. In vitro, phosphorylated by CAMK1 and CAMK4.,similarity:Belongs to the protein kinase superfamily. Ser/Thr protein kinase family.,similarity:Contains 1 protein kinase domain.,subunit:Interacts with CAMK4 and calmodulin.,		

Validation Data



Western blot analysis of lysates from DU145 cells, primary antibody was diluted at 1:1000, 4°over night

| Contact information

Orders: order@immunoway.com
Support: tech@immunoway.com
Telephone: 877-594-3616 (Toll Free), 408-747-0185
Website: <http://www.immunoway.com>
Address: 2200 Ringwood Ave San Jose, CA 95131 USA



Please scan the QR code
to access additional
product information:
KKCC1 Rabbit pAb

For Research Use Only. Not for Use in Diagnostic Procedures.

[Antibody](#) | [ELISA Kits](#) | [Protein](#) | [Reagents](#)