

GCDFP-15 (PT1915R) PT™ Rabbit mAb

CatalogNo: YM960161 **Recombinant** 

Key Features

Host Species

- Rabbit

Reactivity

- Human

Applications

- WB,IHC,IF,ELISA

MW

- 17kD (Calculated)
- 18kD (Observed)

Isotype

- IgG,Kappa

Storage

Storage* -15°C to -25°C/1 year(Do not lower than -25°C)

Formulation PBS, 50% glycerol, 0.05% Proclin 300, 0.05%BSA

Recommended Dilution Ratios

WB 1:10000-1:50000

IF 1:200-1:1000

ELISA 1:5000-1:20000

Basic Information

Clonality Monoclonal

Clone Number PT1915R

Immunogen Information

Specificity Endogenous

Target Information

Gene name PIP GCDFP15 GPIP4

Protein Name BRST-2;BRST2;GCDFP-15;GCDGP15;gp17;GPIP4;Gross cystic disease fluid protein 15;PIP;PIP_HUMAN;Prolactin induced protein;Prolactin inducible protein precursor;Prolactin-induced protein;Prolactin-inducible protein;SABP;Secretory actin binding protein;Secretory actin-binding protein

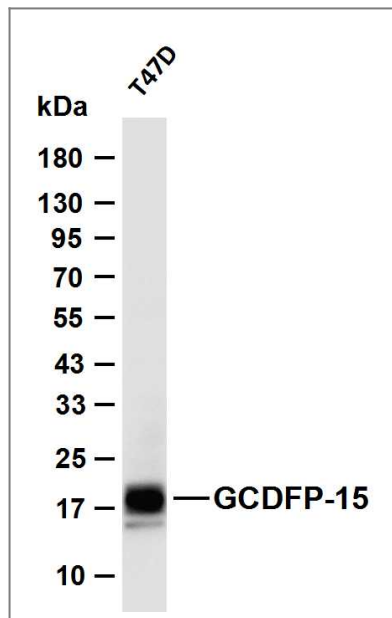
Organism	Gene ID	UniProt ID
Human	5304;	P12273;
Mouse		P02816;
Rat		O70417;

Cellular Localization Cytoplasmic

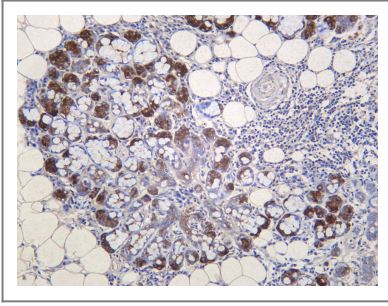
Tissue specificity Breast

Function induction:By prolactin and androgen; inhibited by estrogen.,similarity:Belongs to the PIP family.,subunit:Monomer. Interacts with AZGP1.,tissue specificity:Expressed in pathological conditions of the mammary gland and in several exocrine tissues, such as the lacrimal, salivary, and sweat glands.,

Validation Data



Various whole cell lysates were separated by 4-20% SDS-PAGE, and the membrane was blotted with anti-GCDFP-15 (PT1915R) antibody. The HRP-conjugated Goat anti-Rabbit IgG (H + L) antibody was used to detect the antibody. Lane 1: T47D Predicted band size: 17kDa Observed band size: 18kDa



Human salivary gland was stained with anti-GCDFP-15 (PT1915R) PT™ Rabbit antibody

Contact information

Orders: order@immunoway.com
Support: tech@immunoway.com
Telephone: 877-594-3616 (Toll Free), 408-747-0185
Website: <http://www.immunoway.com>
Address: 2200 Ringwood Ave San Jose, CA 95131 USA



Please scan the QR code to access additional product information:
**GCDFP-15
(PT1915R) PT™
Rabbit mAb**

For Research Use Only. Not for Use in Diagnostic Procedures.

[Antibody](#) | [ELISA Kits](#) | [Protein](#) | [Reagents](#)