

PLB (PT1916R) PT™ Rabbit mAb

CatalogNo: YM960136 **Recombinant** 

Key Features

Host Species

- Rabbit

Reactivity

- Human, Mouse, Rat

Applications

- WB, IHC, IF, IP, ELISA

MW

- 6kD (Calculated)
- 24kD (Observed)

Isotype

- IgG, Kappa

Storage

Storage* -15°C to -25°C/1 year (Do not lower than -25°C)**Formulation** PBS, 50% glycerol, 0.05% Proclin 300, 0.05% BSA

Recommended Dilution Ratios

IHC 1:200-1:1000**WB 1:2000-1:10000****IF 1:200-1:1000****ELISA 1:5000-1:20000****IP 1:50-1:200**

Basic Information

Clonality Monoclonal**Clone Number** PT1916R

Immunogen Information

Specificity Endogenous

| Target Information

Gene name PLN

Protein Name Cardiac phospholamban

Organism	Gene ID	UniProt ID
Human	5350 ;	P26678 ;
Mouse	18821 ;	P61014 ;
Rat	64672 ;	P61016 ;

Cellular Localization

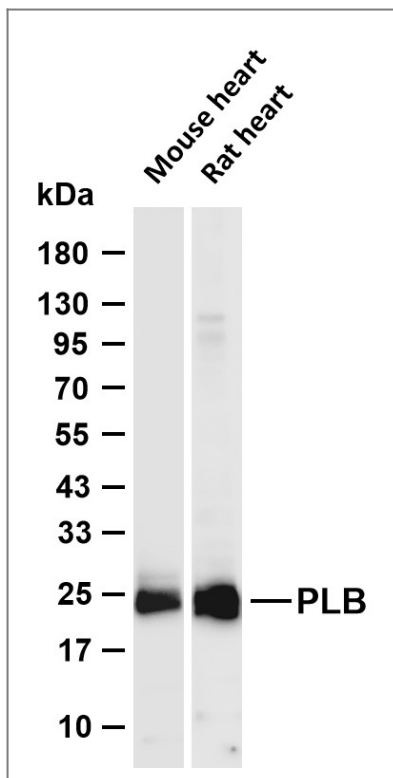
Endoplasmic reticulum membrane ; Single-pass membrane protein . Sarcoplasmic reticulum membrane ; Single-pass membrane protein . Mitochondrion membrane ; Single-pass membrane protein . Membrane ; Single-pass membrane protein . Colocalizes with HAX1 at the endoplasmic reticulum (PubMed:17241641). Colocalizes with DMPK a the sarcoplasmic reticulum (PubMed:15598648). .

Tissue specificity Heart muscle (at protein level).

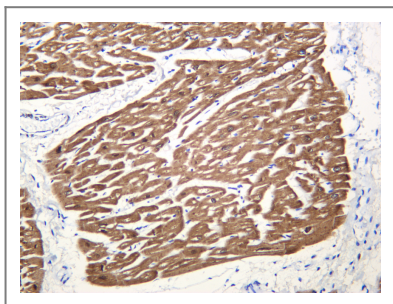
Function

Disease:Defects in PLN are the cause of cardiomyopathy dilated type 1P (CMD1P) [MIM:609909]. Dilated cardiomyopathy is a disorder characterized by ventricular dilation and impaired systolic function, resulting in congestive heart failure and arrhythmia. Patients are at risk of premature death.,Function:Phospholamban has been postulated to regulate the activity of the calcium pump of cardiac sarcoplasmic reticulum.,PTM:Phosphorylated in response to beta-adrenergic stimulation.,similarity:Belongs to the phospholamban family.,subunit:Homopentamer.,tissue specificity:Heart.,

| Validation Data



Various whole cell lysates were separated by 4-20% SDS-PAGE, and the membrane was blotted with anti-PLB (PT1916R) antibody. The HRP-conjugated Goat anti-Rabbit IgG (H + L) antibody was used to detect the antibody. Lane 1: Mouse heart Lane 2: Rat heart Predicted band size: 6kDa Observed band size: 24kDa



Human heart muscle was stained with anti-PLB (PT1916R) PT™ Rabbit antibody

Contact information

Orders: order@immunoway.com
 Support: tech@immunoway.com
 Telephone: 877-594-3616 (Toll Free), 408-747-0185
 Website: <http://www.immunoway.com>
 Address: 2200 Ringwood Ave San Jose, CA 95131 USA



Please scan the QR code to access additional product information:
PLB (PT1916R) PT™ Rabbit mAb

For Research Use Only. Not for Use in Diagnostic Procedures.

[Antibody](#) | [ELISA Kits](#) | [Protein](#) | [Reagents](#)