

HGFL (PT1892R) PT™ Rabbit mAb

CatalogNo: YM960093 **Recombinant** 

Key Features

Host Species

- Rabbit

Reactivity

- Human, Mouse, Rat

Applications

- WB, IHC, IF, ELISA

MW

- 80kD (Calculated)
- 80kD (Observed)

Isotype

- IgG, Kappa

Storage

Storage* -15°C to -25°C/1 year (Do not lower than -25°C)**Formulation** PBS, 50% glycerol, 0.05% Proclin 300, 0.05% BSA

Recommended Dilution Ratios

WB 1:2000-1:10000**IF 1:200-1:1000****ELISA 1:5000-1:20000**

Basic Information

Clonality Monoclonal**Clone Number** PT1892R

Immunogen Information

Specificity Endogenous

Target Information

Gene name MST1 D3F15S2 DNF15S2 HGFL

Protein Name Hepatocyte growth factor-like protein (Macrophage stimulatory protein) (Macrophage-stimulating protein) (MSP) [Cleaved into: Hepatocyte growth factor-like protein alpha chain; Hepatocyte growth factor-like protein beta chain]

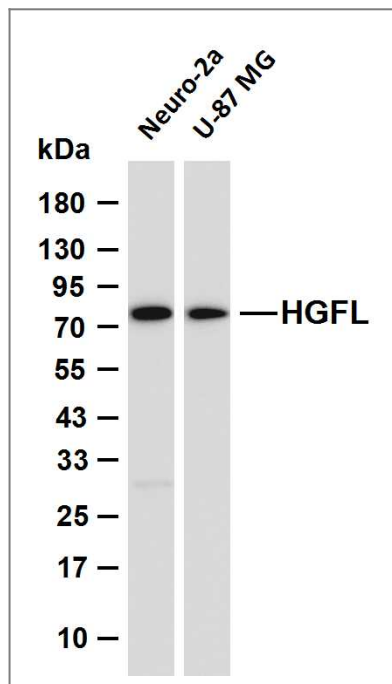
Organism	Gene ID	UniProt ID
Human	4485;	P26927;
Mouse		P26928;

Cellular Localization Secreted.

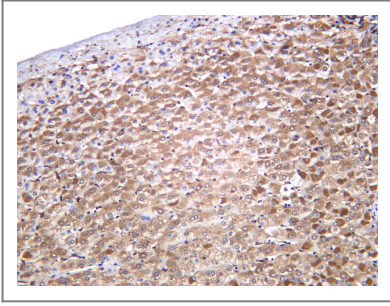
Tissue specificity Liver,Plasma,Testis,

Function Function:Probably has no proteolytic activity, since crucial characteristic of serine proteases catalytic sites are not conserved.,PTM:May be cleaved after Arg-483, to yield two chains held together by disulfide bonds, or two separate polypeptides.,similarity:Belongs to the peptidase S1 family.,similarity:Belongs to the peptidase S1 family. Plasminogen subfamily.,similarity:Contains 1 PAN domain.,similarity:Contains 1 peptidase S1 domain.,similarity:Contains 4 kringle domains.,subunit:Dimer of an alpha chain and a beta chain linked by a disulfide bond.,

Validation Data



Various whole cell lysates were separated by 4-20% SDS-PAGE, and the membrane was blotted with anti-HGFL (PT1892R) antibody. The HRP-conjugated Goat anti-Rabbit IgG (H + L) antibody was used to detect the antibody. Lane 1: Neuro-2a Lane 2: U-87 MG Predicted band size: 80kDa Observed band size: 80kDa



Human liver was stained with anti-HGFL (PT1892R) PT™ Rabbit antibody

| Contact information

Orders: order@immunoway.com
Support: tech@immunoway.com
Telephone: 877-594-3616 (Toll Free), 408-747-0185
Website: <http://www.immunoway.com>
Address: 2200 Ringwood Ave San Jose, CA 95131 USA



Please scan the QR code
to access additional
product information:
HGFL (PT1892R)
PT™ Rabbit mAb

For Research Use Only. Not for Use in Diagnostic Procedures.

[Antibody](#) | [ELISA Kits](#) | [Protein](#) | [Reagents](#)