

MARCO (PT1704R) PT™ Rabbit mAb

CatalogNo: YM9546 **Recombinant** 

Key Features

Host Species

- Rabbit

Reactivity

- Mouse

Applications

- WB,IHC,IF,ELISA

MW

- 53kD (Calculated)
- 68kD (Observed)

Isotype

- IgG,Kappa

Storage

Storage* -15°C to -25°C/1 year(Do not lower than -25°C)**Formulation** PBS, 50% glycerol, 0.05% Proclin 300, 0.05%BSA

Recommended Dilution Ratios

IHC 1:200-1:1000**WB 1:2000-1:10000****IF 1:200-1:1000****ELISA 1:5000-1:20000**

Basic Information

Clonality Monoclonal**Clone Number** PT1704R

Immunogen Information

Immunogen The specific immunogen used to produce this antibody is proprietary information.**Specificity** Endogenous

Target Information

Gene name MARCO SCARA2

Protein Name Macrophage receptor MARCO (Macrophage receptor with collagenous structure) (Scavenger receptor class A member 2)

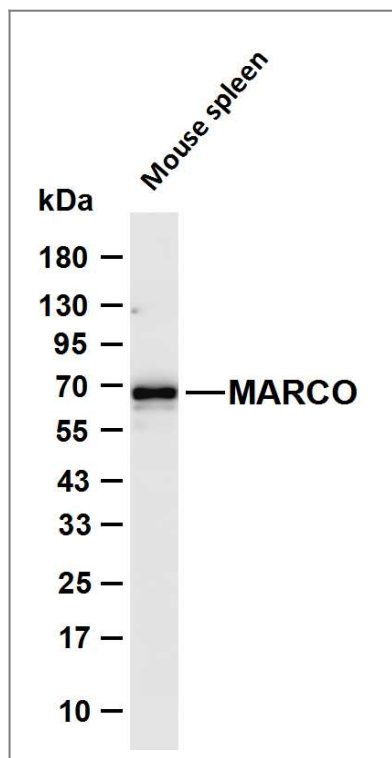
Organism	Gene ID	UniProt ID
Human	8685;	Q9UEW3;
Mouse		Q60754;

Cellular Localization Cell membrane ; Single-pass type II membrane protein .

Tissue specificity Expressed in alveolar macrophages (at protein level). Detected in macrophages from various tissues including thymus, kidney, Kupffer cells of liver, and spleen (PubMed:9468508).

Function Function: Binds Gram-positive and Gram-negative bacteria., similarity: Contains 1 collagen-like domain., similarity: Contains 1 SRCR domain.,

Validation Data



Various whole cell lysates were separated by 4-20% SDS-PAGE, and the membrane was blotted with anti-MARCO (PT1704R) antibody. The HRP-conjugated Goat anti-Rabbit IgG (H + L) antibody was used to detect the antibody. Lane 1: Mouse spleen Predicted band size: 53kDa Observed band size: 68kDa

Contact information

Orders: order@immunoway.com
Support: tech@immunoway.com
Telephone: 877-594-3616 (Toll Free), 408-747-0185
Website: http://www.immunoway.com
Address: 2200 Ringwood Ave San Jose, CA 95131 USA



Please scan the QR code
to access additional
product information:
MARCO (PT1704R)
PT™ Rabbit mAb

For Research Use Only. Not for Use in Diagnostic Procedures.

[Antibody](#) | [ELISA Kits](#) | [Protein](#) | [Reagents](#)