

## MKP-4 (PT1683R) PT™ Rabbit mAb

CatalogNo: YM9525 **Recombinant** 

### Key Features

#### Host Species

- Rabbit

#### Reactivity

- Human

#### Applications

- WB,IHC,IF,ELISA

#### MW

- 42kD (Calculated)
- 42kD (Observed)

#### Isotype

- IgG,Kappa

### Storage

**Storage\*** -15°C to -25°C/1 year(Do not lower than -25°C)**Formulation** PBS, 50% glycerol, 0.05% Proclin 300, 0.05%BSA

### Recommended Dilution Ratios

**IHC 1:200-1:1000****WB 1:2000-1:10000****IF 1:200-1:1000****ELISA 1:5000-1:20000**

### Basic Information

**Clonality** Monoclonal**Clone Number** PT1683R

### Immunogen Information

**Specificity** Endogenous

### Target Information

**Gene name** DUSP9

**Protein Name** Dual specificity protein phosphatase 9

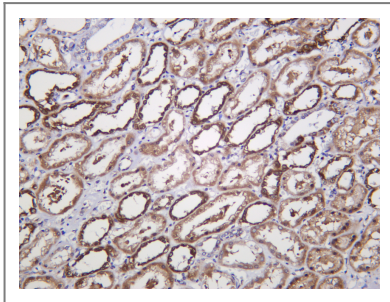
Organism	Gene ID	UniProt ID
Human	<a href="#">1852;</a>	<a href="#">Q99956;</a>

**Cellular Localization** Cytoplasm.

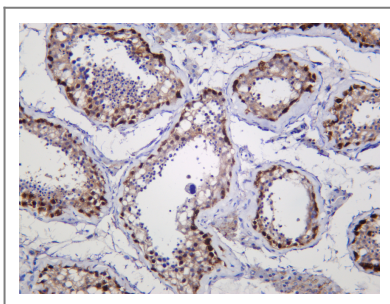
**Tissue specificity** Kidney,Liver,Lung,Placenta,

**Function** Catalytic activity:A phosphoprotein + H(2)O = a protein + phosphate.,Catalytic activity:Protein tyrosine phosphate + H(2)O = protein tyrosine + phosphate.,Function:Inactivates MAP kinases. Has a specificity for the ERK family.,similarity:Belongs to the protein-tyrosine phosphatase family. Non-receptor class dual specificity subfamily.,similarity:Contains 1 rhodanese domain.,similarity:Contains 1 tyrosine-protein phosphatase domain.,

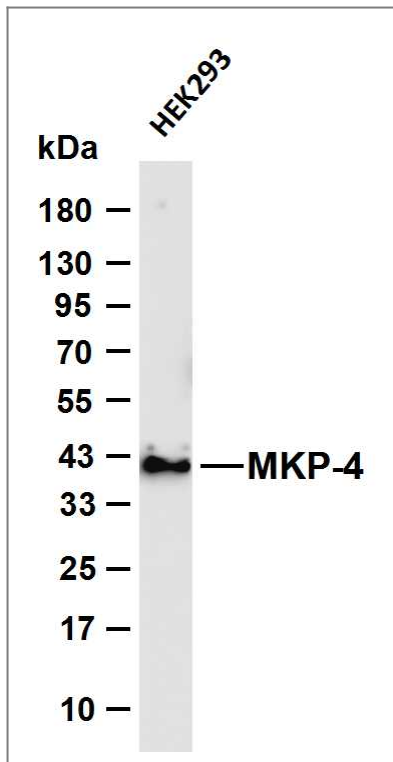
## Validation Data



Human kidney was stained with anti-MKP-4 (PT1683R) Rabbit antibody



Human testis was stained with anti-MKP-4 (PT1683R) Rabbit antibody



Various whole cell lysates were separated by 4-20% SDS-PAGE, and the membrane was blotted with anti-MKP-4 (PT1683R) antibody. The HRP-conjugated Goat anti-Rabbit IgG (H + L) antibody was used to detect the antibody. Lane 1: HEK293 Predicted band size: 42kDa Observed band size: 42kDa

## Contact information

Orders: [order@immunoway.com](mailto:order@immunoway.com)  
Support: [tech@immunoway.com](mailto:tech@immunoway.com)  
Telephone: 877-594-3616 (Toll Free), 408-747-0185  
Website: <http://www.immunoway.com>  
Address: 2200 Ringwood Ave San Jose, CA 95131 USA



Please scan the QR code to access additional product information:  
**MKP-4 (PT1683R)**  
**PT™ Rabbit mAb**

For Research Use Only. Not for Use in Diagnostic Procedures.

[Antibody](#) | [ELISA Kits](#) | [Protein](#) | [Reagents](#)