

## Claudin-11 (PT1418R) PT™ Rabbit mAb

CatalogNo: YM9260 **Recombinant** 

### Key Features

#### Host Species

- Rabbit

#### Reactivity

- Human, Mouse, Rat

#### Applications

- WB, IF, ELISA

#### MW

- 22kD (Calculated)  
22kD (Observed)

#### Isotype

- IgG, Kappa

### Recommended Dilution Ratios

**WB 1:500-1:2000**

**IF 1:200-1:1000**

**ELISA 1:5000-1:20000**

### Storage

**Storage\*** -15°C to -25°C/1 year (Do not lower than -25°C)

**Formulation** PBS, 50% glycerol, 0.05% Proclin 300, 0.05% BSA

### Basic Information

**Clonality** Monoclonal

**Clone Number** PT1418R

### Immunogen Information

**Specificity** Endogenous

### Target Information

**Gene name** CLDN11

**Protein Name** Claudin-11

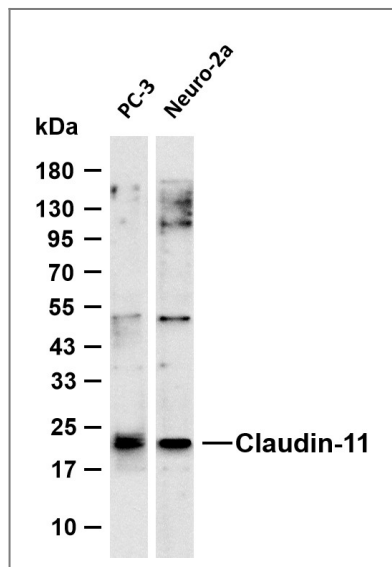
Organism	Gene ID	UniProt ID
Human	<a href="#">5010</a> ;	<a href="#">O75508</a> ;
Mouse	<a href="#">18417</a> ;	<a href="#">Q60771</a> ;
Rat		<a href="#">Q99P82</a> ;

**Cellular Localization** Cell junction, tight junction. Cell membrane ; Multi-pass membrane protein .

**Tissue specificity** Lung,Spinal cord,

**Function** Function:Plays a major role in tight junction-specific obliteration of the intercellular space, through calcium-independent cell-adhesion activity.,similarity:Belongs to the claudin family.,subunit:Interacts with tetraspanin-3/TSPAN3.,

## Validation Data



Various whole cell lysates were separated by 4-20% SDS-PAGE, and the membrane was blotted with anti-Claudin-11 (PT1418R) antibody. The HRP-conjugated Goat anti-Rabbit IgG (H + L) antibody was used to detect the antibody. Lane 1: PC-3 Lane 2: Neuro-2a Predicted band size: 22kDa Observed band size: 22kDa

## Contact information

Orders: [order@immunoway.com](mailto:order@immunoway.com)  
Support: [tech@immunoway.com](mailto:tech@immunoway.com)  
Telephone: 877-594-3616 (Toll Free), 408-747-0185  
Website: <http://www.immunoway.com>  
Address: 2200 Ringwood Ave San Jose, CA 95131 USA



Please scan the QR code to access additional product information:  
**Claudin-11 (PT1418R) PT™ Rabbit mAb**

