

## MRPS18B (PT1334R) PT™ Rabbit mAb

CatalogNo: YM9176 **Recombinant** 

### Key Features

#### Host Species

- Rabbit

#### Reactivity

- Human, Mouse, Rat

#### Applications

- WB, IF, IP, ELISA

#### MW

- 29kD (Calculated)
- 29kD (Observed)

#### Isotype

- IgG, Kappa

### Recommended Dilution Ratios

**WB 1:2000-1:10000**

**IF 1:200-1:1000**

**ELISA 1:5000-1:20000**

**IP 1:50-1:200**

### Storage

**Storage\*** -15°C to -25°C/1 year (Do not lower than -25°C)

**Formulation** PBS, 50% glycerol, 0.05% Proclin 300, 0.05% BSA

### Basic Information

**Clonality** Monoclonal

**Clone Number** PT1334R

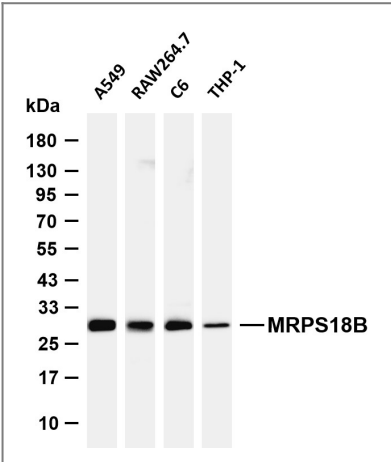
### Immunogen Information

**Specificity** Endogenous

### Target Information

Gene name	MRPS18B C6orf14 HSPC183 PTD017		
Protein Name	28S ribosomal protein S18b, mitochondrial (MRP-S18-b) (Mrps18-b) (S18mt-b) (28S ribosomal protein S18-2, mitochondrial) (MRP-S18-2)		
	Organism	Gene ID	UniProt ID
	Human	<a href="#">28973</a> ;	<a href="#">Q9Y676</a> ;
	Mouse		<a href="#">Q99N84</a> ;
Cellular Localization	Mitochondrion .		
Tissue specificity	Brain,Heart,Peripheral blood leukocyte,Pituitary tumor,Skeletal mus		
Function	similarity:Belongs to the ribosomal protein S18P family.,subunit:Component of the mitochondrial ribosome small subunit (28S) which comprises a 12S rRNA and about 30 distinct proteins.,		

Validation Data



Various whole cell lysates were separated by 4-20% SDS-PAGE, and the membrane was blotted with anti-MRPS18B (PT1334R) antibody. The HRP-conjugated Goat anti-Rabbit IgG (H + L) antibody was used to detect the antibody. Lane 1: A549 Lane 2: RAW264.7 Lane 3: C6 Lane 4: THP-1  
Predicted band size: 29kDa Observed band size: 29kDa

Contact information

Orders: order@immunoway.com  
Support: tech@immunoway.com  
Telephone: 877-594-3616 (Toll Free), 408-747-0185  
Website: http://www.immunoway.com  
Address: 2200 Ringwood Ave San Jose, CA 95131 USA



Please scan the QR code to access additional product information:  
**MRPS18B (PT1334R)**  
**PT™ Rabbit mAb**