

SF2 (PT1323R) PT™ Rabbit mAb

CatalogNo: YM9165 **Recombinant** 

Key Features

Host Species

- Rabbit

Reactivity

- Human, Mouse, Rat

Applications

- WB, IHC, IF, ELISA

MW

- 28kD (Calculated)
- 28kD (Observed)

Isotype

- IgG, Kappa

Recommended Dilution Ratios

IHC 1:500-1:2000**WB 1:2000-1:10000****IF 1:200-1:1000****ELISA 1:5000-1:20000**

Storage

Storage* -15°C to -25°C/1 year (Do not lower than -25°C)**Formulation** PBS, 50% glycerol, 0.05% Proclin 300, 0.05% BSA

Basic Information

Clonality Monoclonal**Clone Number** PT1323R

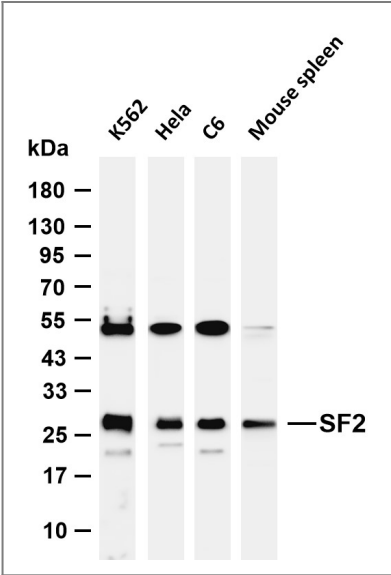
Immunogen Information

Specificity Endogenous

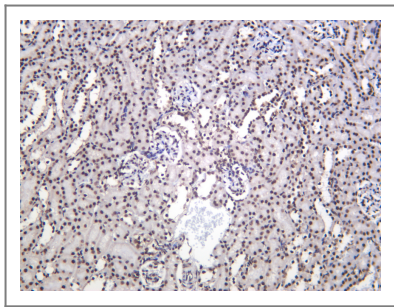
Target Information

Gene name	SRSF1 ASF SF2 SF2P33 SFRS1 OK/SW-cl.3		
Protein Name	Serine/arginine-rich splicing factor 1 (Alternative-splicing factor 1) (ASF-1) (Splicing factor, arginine/serine-rich 1) (pre-mRNA-splicing factor SF2, P33 subunit)		
	Organism	Gene ID	UniProt ID
	Human	6426 ;	Q07955 ;
	Mouse	110809 ;	Q6PDM2 ;
Cellular Localization	Cytoplasm . Nucleus speckle . In nuclear speckles. Shuttles between the nucleus and the cytoplasm (PubMed:12215544, PubMed:20308322, PubMed:9420331, PubMed:24449914). Nuclear import is mediated via interaction with TNPO3 (PubMed:24449914). .		
Function	Plays a role in preventing exon skipping, ensuring the accuracy of splicing and regulating alternative splicing. Interacts with other spliceosomal components, via the RS domains, to form a bridge between the 5'- and 3'-splice site binding components, U1 snRNP and U2AF. Can stimulate binding of U1 snRNP to a 5'-splice site-containing pre-mRNA. Binds to purine-rich RNA sequences, either the octamer, 5'-RGAAGAAC-3' (r=A or G) or the decamers, AGGACAGAGC/AGGACGAAGC. Binds preferentially to the 5'-CGAGGCG-3' motif in vitro. Three copies of the octamer constitute a powerful splicing enhancer in vitro, the ASF/SF2 splicing enhancer (ASE) which can specifically activate ASE-dependent splicing. Isoform ASF-2 and isoform ASF-3 act as splicing repressors. May function as export adapter involved in mRNA nuclear export through the TAP/NXF1 pathway.		

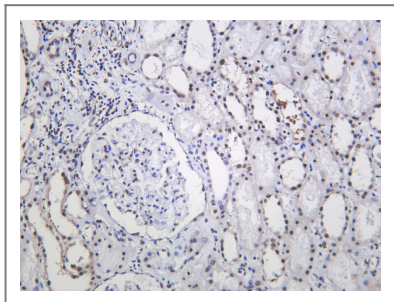
Validation Data



Various whole cell lysates were separated by 4-20% SDS-PAGE, and the membrane was blotted with anti-SF2 (PT1323R) antibody. The HRP-conjugated Goat anti-Rabbit IgG (H + L) antibody was used to detect the antibody. Lane 1: K562 Lane 2: HeLa Lane 3: C6 Lane 4: Mouse spleen
Predicted band size: 28kDa Observed band size: 28kDa



Mouse kidney was stained with anti-SF2 (PT1323R) Rabbit antibody



Human kidney was stained with anti-SF2 (PT1323R) Rabbit antibody

| Contact information

Orders: order@immunoway.com
Support: tech@immunoway.com
Telephone: 877-594-3616 (Toll Free), 408-747-0185
Website: <http://www.immunoway.com>
Address: 2200 Ringwood Ave San Jose, CA 95131 USA



Please scan the QR code
to access additional
product information:
**SF2 (PT1323R) PT™
Rabbit mAb**

For Research Use Only. Not for Use in Diagnostic Procedures.

[Antibody](#) | [ELISA Kits](#) | [Protein](#) | [Reagents](#)