

Adenosine A1-R (PT1320R) PT™ Rabbit mAb

CatalogNo: YM9162 **Recombinant** 

Key Features

Host Species

- Rabbit

Reactivity

- Human, Mouse, Rat

Applications

- WB, IHC, IF, IP, ELISA

MW

- 37kD (Calculated)
- 37kD (Observed)

Isotype

- IgG, Kappa

Recommended Dilution Ratios

IHC 1:200-1:1000

WB 1:2000-1:10000

IF 1:200-1:1000

ELISA 1:5000-1:20000

IP 1:50-1:200

Storage

Storage* -15°C to -25°C/1 year (Do not lower than -25°C)

Formulation PBS, 50% glycerol, 0.05% Proclin 300, 0.05% BSA

Basic Information

Clonality Monoclonal

Clone Number PT1320R

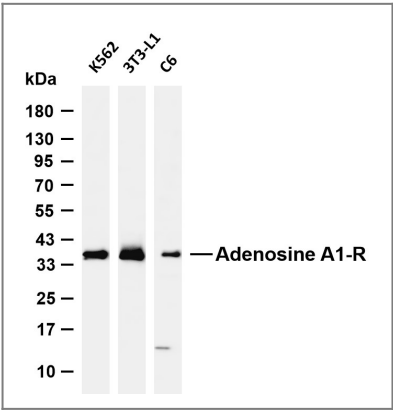
Immunogen Information

Specificity Endogenous

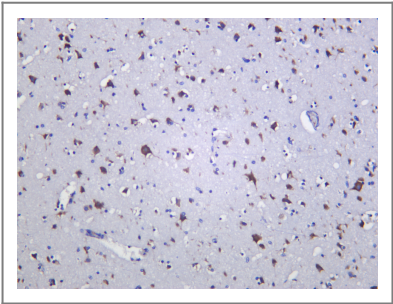
Target Information

Gene name	ADORA1		
Protein Name	Adenosine receptor A1		
	Organism	Gene ID	UniProt ID
	Human	134;	P30542;
	Mouse		Q60612;
	Rat	29290;	P25099;
Cellular Localization	Cell membrane ; Multi-pass membrane protein.		
Tissue specificity	Brain,Heart,Hippocampus,		
Function	Function:Receptor for adenosine. The activity of this receptor is mediated by G proteins which inhibit adenylyl cyclase.,similarity:Belongs to the G-protein coupled receptor 1 family.,		

Validation Data



Various whole cell lysates were separated by 4-20% SDS-PAGE, and the membrane was blotted with anti-Adenosine A1-R (PT1320R) antibody. The HRP-conjugated Goat anti-Rabbit IgG (H + L) antibody was used to detect the antibody. Lane 1: K562 Lane 2: 3T3-L1 Lane 3: C6 Predicted band size: 37kDa Observed band size: 37kDa



Human brain was stained with anti-Adenosine A1-R (PT1320R) Rabbit antibody

Contact information

Orders: order@immunoway.com
Support: tech@immunoway.com
Telephone: 877-594-3616 (Toll Free), 408-747-0185
Website: <http://www.immunoway.com>
Address: 2200 Ringwood Ave San Jose, CA 95131 USA



Please scan the QR code
to access additional
product information:
**Adenosine A1-R
(PT1320R) PT™
Rabbit mAb**

For Research Use Only. Not for Use in Diagnostic Procedures.

[Antibody](#) | [ELISA Kits](#) | [Protein](#) | [Reagents](#)