

# Cytokeratin 13 (PT1296R) PT™ Rabbit mAb

CatalogNo: YM9138 **Recombinant** 

## Key Features

### Host Species

- Rabbit

### Reactivity

- Human, Mouse, Rat

### Applications

- WB, IHC, IF, ELISA

### MW

- 50kD (Calculated)
- 50kD (Observed)

### Isotype

- IgG, Kappa

## Recommended Dilution Ratios

**IHC 1:200-1:1000****WB 1:2000-1:10000****IF 1:200-1:1000****ELISA 1:5000-1:20000**

## Storage

**Storage\*** -15°C to -25°C/1 year (Do not lower than -25°C)**Formulation** PBS, 50% glycerol, 0.05% Proclin 300, 0.05% BSA

## Basic Information

**Clonality** Monoclonal**Clone Number** PT1296R

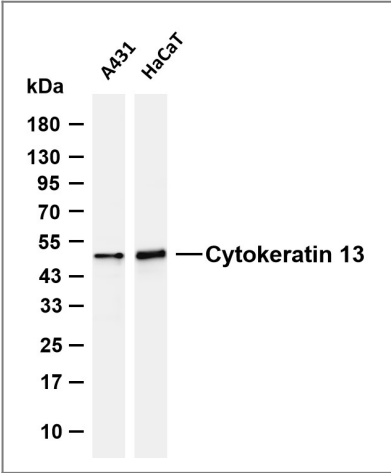
## Immunogen Information

**Specificity** Endogenous

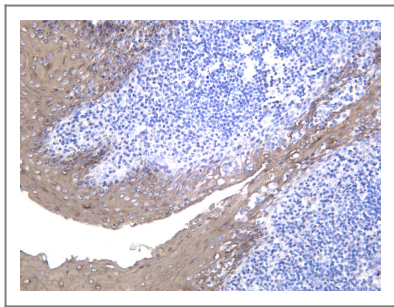
## Target Information

Gene name	KRT13		
Protein Name	Keratin type I cytoskeletal 13		
	Organism	Gene ID	UniProt ID
	Human	<a href="#">3860</a> ;	<a href="#">P13646</a> ;
	Mouse	<a href="#">16663</a> ;	<a href="#">P08730</a> ;
	Rat	<a href="#">287699</a> ;	<a href="#">Q6IFV4</a> ;
Cellular Localization	nucleus,intermediate filament,keratin filament,intermediate filament cytoskeleton,extracellular exosome,		
Tissue specificity	Expressed in some epidermal sweat gland ducts (at protein level) and in exocervix, esophagus and placenta.		
Function	Disease:Defects in KRT13 are a cause of white sponge nevus of cannon (WSN) [MIM:193900]. WSN is a rare autosomal dominant disorder which predominantly affects non-cornified stratified squamous epithelia. Clinically, it is characterized by the presence of soft, white, and spongy plaques in the oral mucosa. The characteristic histopathologic features are epithelial thickening, parakeratosis, and vacuolization of the suprabasal layer of oral epithelial keratinocytes. Less frequently the mucous membranes of the nose, esophagus, genitalia and rectum are involved.,miscellaneous:There are two types of cytoskeletal and microfibrillar keratin: I (acidic; 40-55 kDa) and II (neutral to basic; 56-70 kDa).,online information:Keratin-13 entry,PTM:O-glycosylated; glycans consist of single N-acetylglucosamine residues.,similarity:Belongs to the intermediate filament family.,subunit:Heterotetramer of two type I and two type II keratins. keratin-13 is generally associated with keratin-4.,tissue specificity:Expressed in some epidermal sweat gland ducts (at protein level) and in exocervix, esophagus and placenta.,		

Validation Data



Various whole cell lysates were separated by 4-20% SDS-PAGE, and the membrane was blotted with anti-Cytokeratin 13 (PT1296R) antibody. The HRP-conjugated Goat anti-Rabbit IgG (H + L) antibody was used to detect the antibody. Lane 1: A431 Lane 2: HaCaT Predicted band size: 50kDa Observed band size: 50kDa



Human tonsil was stained with anti-Cytokeratin 13 (PT1296R) Rabbit antibody

## | Contact information

Orders: [order@immunoway.com](mailto:order@immunoway.com)  
Support: [tech@immunoway.com](mailto:tech@immunoway.com)  
Telephone: 877-594-3616 (Toll Free), 408-747-0185  
Website: <http://www.immunoway.com>  
Address: 2200 Ringwood Ave San Jose, CA 95131 USA



Please scan the QR code to access additional product information:  
**Cytokeratin 13 (PT1296R) PT™ Rabbit mAb**

---

For Research Use Only. Not for Use in Diagnostic Procedures.

[Antibody](#) | [ELISA Kits](#) | [Protein](#) | [Reagents](#)