

## MYH10 (PT1265R) PT™ Rabbit mAb

CatalogNo: YM9107 **Recombinant** 

### Key Features

#### Host Species

- Rabbit

#### Reactivity

- Human, Mouse, Rat

#### Applications

- WB, IHC, IF, IP, ELISA

#### MW

- 229kD (Calculated)  
229kD (Observed)

#### Isotype

- IgG, Kappa

### Recommended Dilution Ratios

IHC 1:500-1:2000

WB 1:2000-1:10000

IF 1:200-1:1000

ELISA 1:5000-1:20000

IP 1:50-1:200

### Storage

**Storage\*** -15°C to -25°C/1 year (Do not lower than -25°C)

**Formulation** PBS, 50% glycerol, 0.05% Proclin 300, 0.05% BSA

### Basic Information

**Clonality** Monoclonal

**Clone Number** PT1265R

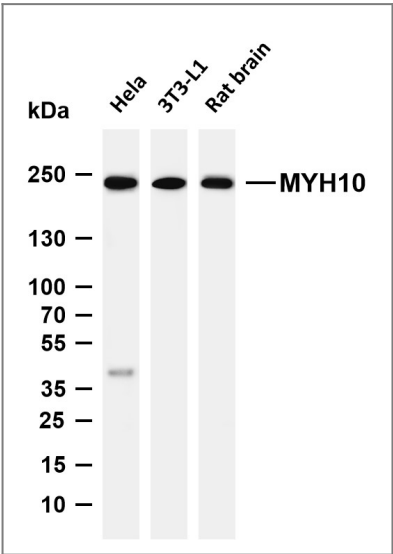
### Immunogen Information

**Specificity** Endogenous

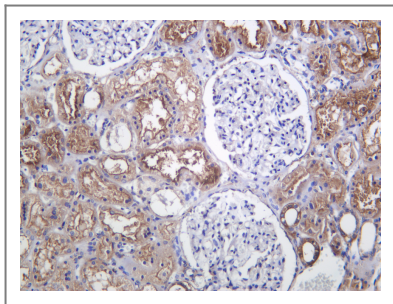
## Target Information

Gene name	MYH10		
Protein Name	Myosin-10 (Cellular myosin heavy chain, type B) (Myosin heavy chain 10) (Myosin heavy chain, non-muscle IIb) (Non-muscle myosin heavy chain B) (NMMHC-B) (Non-muscle myosin heavy chain IIb) (NMMHC II-b) (NMMHC-IIb)		
	Organism	Gene ID	UniProt ID
	Human	<a href="#">4628;</a>	<a href="#">P35580;</a>
	Mouse	<a href="#">77579;</a>	<a href="#">Q61879;</a>
	Rat	<a href="#">79433;</a>	<a href="#">Q9JLT0;</a>
Cellular Localization	Cell projection, lamellipodium . Colocalizes with MCC at the leading edge of migrating cells.		
Tissue specificity	Isoform 1 is expressed in cerebellum and spinal chord. Isoform 2 is expressed in cerebrum and retina. Isoform 3 is expressed in the cerebrum and to a much lower extent in cerebellum.		
Function	Cellular myosin that appears to play a role in cytokinesis, cell shape, and specialized functions such as secretion and capping. Involved with LARP6 in the stabilization of type I collagen mRNAs for CO1A1 and CO1A2. During cell spreading, plays an important role in cytoskeleton reorganization, focal contacts formation (in the central part but not the margins of spreading cells), and lamellipodial extension; this function is mechanically antagonized by MYH9.		

## Validation Data



Various whole cell lysates were separated by 4-8% SDS-PAGE, and the membrane was blotted with anti-MYH10 (PT1265R) antibody. The HRP-conjugated Goat anti-Rabbit IgG (H + L) antibody was used to detect the antibody. Lane 1: HeLa Lane 2: 3T3-L1 Lane 3: Rat brain Predicted band size: 229kDa Observed band size: 229kDa



Human kidney was stained with anti-MYH10 (PT1265R) Rabbit antibody

## **| Contact information**

Orders: [order@immunoway.com](mailto:order@immunoway.com)  
Support: [tech@immunoway.com](mailto:tech@immunoway.com)  
Telephone: 877-594-3616 (Toll Free), 408-747-0185  
Website: <http://www.immunoway.com>  
Address: 2200 Ringwood Ave San Jose, CA 95131 USA



Please scan the QR code  
to access additional  
product information:  
**MYH10 (PT1265R)**  
**PT™ Rabbit mAb**

---

For Research Use Only. Not for Use in Diagnostic Procedures.

[Antibody](#) | [ELISA Kits](#) | [Protein](#) | [Reagents](#)