

## G6PD (PT1244R) PT™ Rabbit mAb

CatalogNo: YM9086 **Recombinant** 

### Key Features

**Host Species**

- Rabbit

**Reactivity**

- Human, Mouse, Rat

**Applications**

- WB, IHC, IF, IP, ELISA

**MW**

- 59kD (Calculated)
- 59kD (Observed)

**Isotype**

- IgG, Kappa

### Recommended Dilution Ratios

**IHC 1:200-1:1000****WB 1:2000-1:10000****IF 1:200-1:1000****ELISA 1:5000-1:20000****IP 1:50-1:200**

### Storage

**Storage\*** -15°C to -25°C/1 year (Do not lower than -25°C)**Formulation** PBS, 50% glycerol, 0.05% Proclin 300, 0.05% BSA

### Basic Information

**Clonality** Monoclonal**Clone Number** PT1244R

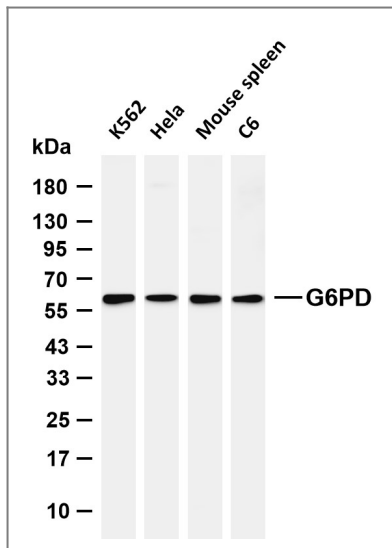
### Immunogen Information

**Specificity** Endogenous

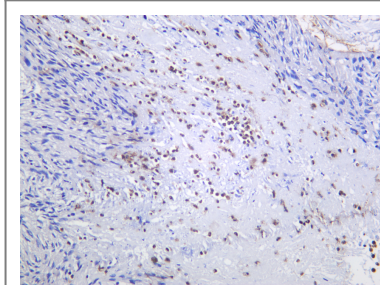
## Target Information

Gene name	G6PD		
Protein Name	G6PD(Glucose 6 Phosphate Dehydrogenase)		
	Organism	Gene ID	UniProt ID
	Human	<a href="#">2539</a> ;	<a href="#">P11413</a> ;
	Rat		<a href="#">P05370</a> ;
Cellular Localization	Cytoplasm, cytosol . Membrane; Peripheral membrane protein .		
Tissue specificity	Isoform Long is found in lymphoblasts, granulocytes and sperm.		
Function	Catalytic activity:D-glucose 6-phosphate + NADP(+) = D-glucono-1,5-lactone 6-phosphate + NADPH.,Disease:Defects in G6PD are the cause of chronic non-spherocytic hemolytic anemia (CNSHA) [MIM:305900]. Deficiency of G6PD is associated with hemolytic anemia in two different situations. First, in areas in which malaria has been endemic, G6PD-deficiency alleles have reached high frequencies (1% to 50%) and deficient individuals, though essentially asymptomatic in the steady state, have a high risk of acute hemolytic attacks. Secondly, sporadic cases of G6PD deficiency occur at a very low frequencies, and they usually present a more severe phenotype. Several types of CNSHA are recognized. Class-I variants are associated with severe NSHA; class-II have an activity <10% of normal; class-III have an activity of 10% to 60% of normal; class-IV have near normal activity.,Function:Produces pentose sugars for nucleic acid synthesis and main producer of NADPH reducing power.,miscellaneous:Has NADP both as cofactor (bound to the N-terminal domain) and as structural element bound to the C-terminal domain.,online information:G6PD deficiency resource,online information:G6PD mutation database,online information:The Singapore human mutation and polymorphism database,pathway:Carbohydrate degradation; pentose phosphate pathway.,pathway:Carbohydrate degradation; pentose phosphate pathway; D-ribulose 5-phosphate from D-glucose 6-phosphate (oxidative stage): step 1/3.,polymorphism:The sequence shown is that of variant B, the most common variant.,similarity:Belongs to the glucose-6-phosphate dehydrogenase family.,subunit:Homodimer or homotetramer.,tissue specificity:The long isoform is found in lymphoblasts, granulocytes and sperm.,		

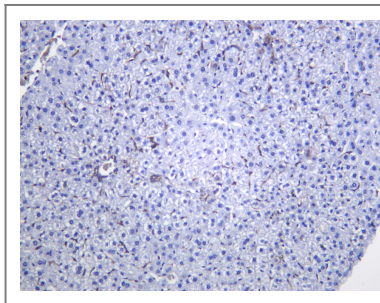
## Validation Data



Various whole cell lysates were separated by 4-20% SDS-PAGE, and the membrane was blotted with anti-G6PD (PT1244R) antibody. The HRP-conjugated Goat anti-Rabbit IgG (H + L) antibody was used to detect the antibody. Lane 1: K562 Lane 2: HeLa Lane 3: Mouse spleen Lane 4: C6  
Predicted band size: 59kDa Observed band size: 59kDa



Human gastric adenocarcinoma was stained with anti-G6PD (PT1244R) Rabbit antibody



Mouse liver was stained with anti-G6PD (PT1244R) Rabbit antibody

## Contact information

Orders: [order@immunoway.com](mailto:order@immunoway.com)  
Support: [tech@immunoway.com](mailto:tech@immunoway.com)  
Telephone: 877-594-3616 (Toll Free), 408-747-0185  
Website: <http://www.immunoway.com>  
Address: 2200 Ringwood Ave San Jose, CA 95131 USA



Please scan the QR code to access additional product information:  
**G6PD (PT1244R)**  
**PT™ Rabbit mAb**