

Neddylin (PT1238R) PT™ Rabbit mAb

CatalogNo: YM9080 **Recombinant** 

Key Features

Host Species

- Rabbit

Reactivity

- Human, Mouse, Rat

Applications

- WB, IHC, IF, IP, ELISA

MW

- 9kD (Calculated)
- 9kD (Observed)

Isotype

- IgG, Kappa

Storage

Storage* -15°C to -25°C/1 year (Do not lower than -25°C)**Formulation** PBS, 50% glycerol, 0.05% Proclin 300, 0.05% BSA

Recommended Dilution Ratios

IHC 1:200-1:1000**WB 1:2000-1:10000****IF 1:200-1:1000****ELISA 1:5000-1:20000****IP 1:50-1:200**

Basic Information

Clonality Monoclonal**Clone Number** PT1238R

Immunogen Information

Specificity Endogenous

Target Information

Gene name NEDD8

Protein Name NEDD8

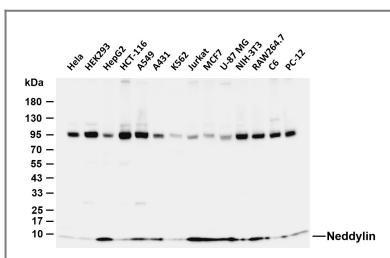
Organism	Gene ID	UniProt ID
Human	4738;	Q15843;
Mouse	18002;	P29595;
Rat	25490;	Q71UE8;

Cellular Localization Nucleus . Mainly nuclear. .

Tissue specificity Highly expressed in heart, skeletal muscle, spleen, thymus, prostate, testis, ovary, colon and leukocytes.

Function Function:Ubiquitin-like protein which plays an important role in cell cycle control and embryogenesis. Covalent attachment to its substrates requires prior activation by the E1 complex UBE1C-APPBP1 and linkage to the E2 enzyme UBE2M. Attachment of NEDD8 to cullins activates their associated E3 ubiquitin ligase activity, and thus promotes polyubiquitination and proteasomal degradation of cyclins and other regulatory proteins.,PTM: Cleavage of precursor form by UCHL3 or SENP8 is necessary for function.,similarity: Belongs to the ubiquitin family.,subcellular location: Mainly nuclear.,subunit: Directly interacts with NUB1 and AHR. Covalently attached to cullins and p53.,tissue specificity: Highly expressed in heart, skeletal muscle, spleen, thymus, prostate, testis, ovary, colon and leukocytes.,

Validation Data



Various whole cell lysates were separated by 4-20% SDS-PAGE, and the membrane was blotted with anti-Neddylin (PT1238R) antibody. The HRP-conjugated Goat anti-Rabbit IgG (H + L) antibody was used to detect the antibody. Lane 1: HeLa Lane 2: HEK293 Lane 3: HepG2 Lane 4: HCT-116 Lane 5: A549 Lane 6: A431 Lane 7: K562 Lane 8: Jurkat Lane 9: MCF7 Lane 10: U-87 MG Lane 11: NIH-3T3 Lane 12: RAW264.7 Lane 13: C6 Lane 14: PC-12 Predicted band size: 9kDa Observed band size: 9kDa

Contact information

Orders: order@immunoway.com
Support: tech@immunoway.com
Telephone: 877-594-3616 (Toll Free), 408-747-0185
Website: <http://www.immunoway.com>
Address: 2200 Ringwood Ave San Jose, CA 95131 USA



Please scan the QR code to access additional product information:
Neddylin (PT1238R)
PT™ Rabbit mAb

