

β2-MG (PT1216R) PT™ Rabbit mAb

CatalogNo: YM9058 **Recombinant** 

Key Features

Host Species

- Rabbit

Reactivity

- Human, Mouse, Rat

Applications

- WB, IHC, IF, IP, ELISA

MW

- 14kD (Calculated)
12kD (Observed)

Isotype

- IgG, Kappa

Recommended Dilution Ratios

IHC 1:2000-1:10000**WB 1:2000-1:10000****IF 1:200-1:1000****ELISA 1:5000-1:20000****IP 1:50-1:200**

Storage

Storage* -15°C to -25°C/1 year (Do not lower than -25°C)**Formulation** PBS, 50% glycerol, 0.05% Proclin 300, 0.05% BSA

Basic Information

Clonality Monoclonal**Clone Number** PT1216R

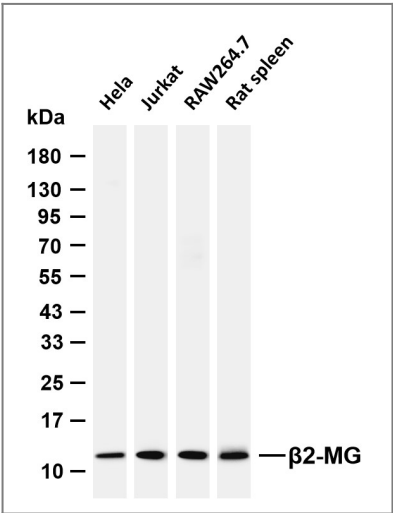
Immunogen Information

Specificity Endogenous

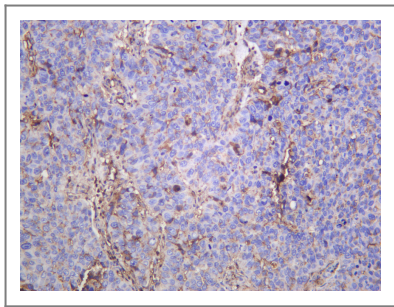
Target Information

Gene name	B2M CDABP0092 HDCMA22P		
Protein Name	Beta-2-microglobulin [Cleaved into: Beta-2-microglobulin form pl 5.3]		
	Organism	Gene ID	UniProt ID
	Human	567 ;	P61769 ;
	Mouse		P01887 ;
	Rat		P07151 ;
Cellular Localization	Secreted . Cell surface . Detected in serum and urine (PubMed:1336137, PubMed:7554280). .; (Microbial infection) In the presence of M.tuberculosis EsxA-EsxB complex decreased amounts of B2M are found on the cell surface (PubMed:25356553). .		
Tissue specificity	Dendritic cell, Eye, Leukemia, Peripheral blood, Skin, Trachea, Urine,		
Function	Disease: Defects in B2M are the cause of hypercatabolic hypoproteinemia [MIM:241600]. Affected individuals show marked reduction in serum concentrations of immunoglobulin and albumin, probably due to rapid degradation. . Function: Beta-2-microglobulin is the beta-chain of major histocompatibility complex class I molecules. . online information: Beta-2-microglobulin entry, PTM: Glycation of Ile-21 is observed in long-term hemodialysis patients. . similarity: Belongs to the beta-2-microglobulin family. . similarity: Contains 1 Ig-like C1-type (immunoglobulin-like) domain. .		

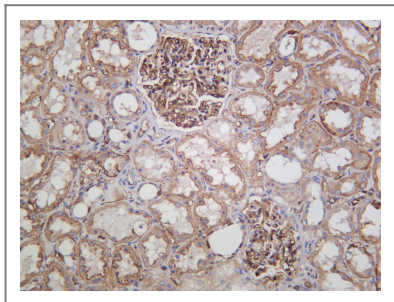
Validation Data



Various whole cell lysates were separated by 4-20% SDS-PAGE, and the membrane was blotted with anti-β2-MG (PT1216R) antibody. The HRP-conjugated Goat anti-Rabbit IgG (H + L) antibody was used to detect the antibody. Lane 1: HeLa Lane 2: Jurkat Lane 3: RAW264.7 Lane 4: Rat spleen
Predicted band size: 14kDa Observed band size: 12kDa



Human bladder carcinoma was stained with anti- β 2-MG (PT1216R) Rabbit antibody



Human kidney was stained with anti- β 2-MG (PT1216R) Rabbit antibody

Contact information

Orders: order@immunoway.com
Support: tech@immunoway.com
Telephone: 877-594-3616 (Toll Free), 408-747-0185
Website: <http://www.immunoway.com>
Address: 2200 Ringwood Ave San Jose, CA 95131 USA



Please scan the QR code
to access additional
product information:
 β 2-MG (PT1216R)
PT™ Rabbit mAb

For Research Use Only. Not for Use in Diagnostic Procedures.

[Antibody](#) | [ELISA Kits](#) | [Protein](#) | [Reagents](#)