

Rab 10 (PT1212R) PT™ Rabbit mAb

CatalogNo: YM9054 **Recombinant** 

Key Features

Host Species

- Rabbit

Reactivity

- Human, Mouse, Rat

Applications

- WB, IF, IP, ELISA

MW

- 23kD (Calculated)
- 23kD (Observed)

Isotype

- IgG, Kappa

Recommended Dilution Ratios

WB 1:2000-1:10000

IF 1:200-1:1000

ELISA 1:5000-1:20000

IP 1:50-1:200

Storage

Storage* -15°C to -25°C/1 year (Do not lower than -25°C)

Formulation PBS, 50% glycerol, 0.05% Proclin 300, 0.05% BSA

Basic Information

Clonality Monoclonal

Clone Number PT1212R

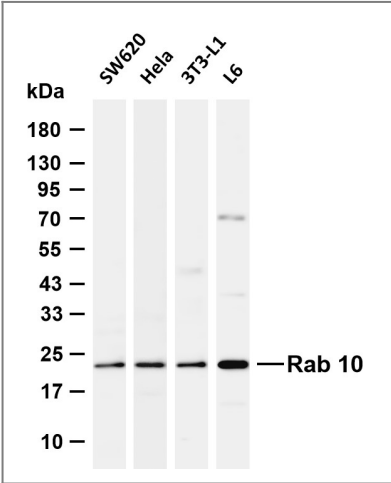
Immunogen Information

Specificity Endogenous

Target Information

Gene name	RAB10		
Protein Name	Ras-related protein Rab-10		
	Organism	Gene ID	UniProt ID
	Human	10890 ;	P61026 ;
	Mouse	19325 ;	P61027 ;
Cellular Localization	Cytoplasmic vesicle membrane ; Lipid-anchor ; Cytoplasmic side . Golgi apparatus membrane . Golgi apparatus, trans-Golgi network membrane . Endosome membrane . Recycling endosome membrane . Cytoplasmic vesicle, phagosome membrane . Cytoplasm, cytoskeleton, cilium basal body . Endoplasmic reticulum membrane . Cytoplasm, perinuclear region . Associates with SLC2A4/GLUT4 storage vesicles (PubMed:22908308). Localizes to the base of the cilium when phosphorylated by LRRK2 on Thr-73 (PubMed:20576682, PubMed:30398148). Transiently associates with phagosomes (By similarity). Localizes to the endoplasmic reticulum at domains of new tubule growth (PubMed:23263280). .		
Tissue specificity	Expressed in the hippocampus (PubMed:29562525). Expressed in neutrophils (at protein level) (PubMed:29127255). Expressed in the testis (at protein level) (PubMed:28067790).		
Function	Function:May be involved in vesicular trafficking and neurotransmitter release.,similarity:Belongs to the small GTPase superfamily. Rab family.,		

Validation Data



Various whole cell lysates were separated by 4-20% SDS-PAGE, and the membrane was blotted with anti-Rab 10 (PT1212R) antibody. The HRP-conjugated Goat anti-Rabbit IgG (H + L) antibody was used to detect the antibody. Lane 1: SW620 Lane 2: HeLa Lane 3: 3T3-L1 Lane 4: L6 Predicted band size: 23kDa Observed band size: 23kDa

Contact information

Orders: order@immunoway.com
Support: tech@immunoway.com
Telephone: 877-594-3616 (Toll Free), 408-747-0185
Website: http://www.immunoway.com
Address: 2200 Ringwood Ave San Jose, CA 95131 USA



Please scan the QR code
to access additional
product information:
Rab 10 (PT1212R)
PT™ Rabbit mAb

For Research Use Only. Not for Use in Diagnostic Procedures.

[Antibody](#) | [ELISA Kits](#) | [Protein](#) | [Reagents](#)