

N WASP (PT1211R) PT™ Rabbit mAb

CatalogNo: YM9053 **Recombinant** 

Key Features

Host Species

- Rabbit

Reactivity

- Human, Mouse, Rat

Applications

- WB, IHC, IF, ELISA

MW

- 55kD (Calculated)
- 65kD (Observed)

Isotype

- IgG, Kappa

Recommended Dilution Ratios

IHC 1:100-1:500**WB 1:2000-1:10000****IF 1:200-1:1000****ELISA 1:5000-1:20000**

Storage

Storage* -15°C to -25°C/1 year (Do not lower than -25°C)**Formulation** PBS, 50% glycerol, 0.05% Proclin 300, 0.05% BSA

Basic Information

Clonality Monoclonal**Clone Number** PT1211R

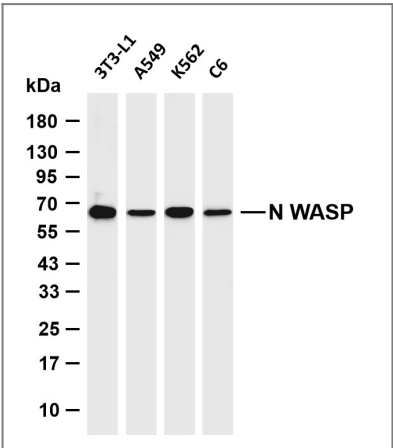
Immunogen Information

Specificity Endogenous

Target Information

Gene name	WASL		
Protein Name	Neural Wiskott-Aldrich syndrome protein (N-WASP)		
	Organism	Gene ID	UniProt ID
	Human	8976 ;	O00401 ;
	Mouse		Q91YD9 ;
	Rat		O08816 ;
Cellular Localization	Cytoplasm, cytoskeleton . Nucleus . Cytoplasm . Preferentially localized in the cytoplasm when phosphorylated and in the nucleus when unphosphorylated (By similarity). Exported from the nucleus by an nuclear export signal (NES)-dependent mechanism to the cytoplasm (By similarity). .		
Tissue specificity	Brain,Liver,		
Function	Function:Regulates actin polymerization by stimulating the actin-nucleating activity of the Arp2/3 complex. Binds to HSF1/HSTF1 and forms a complex on heat shock promoter elements (HSE) that negatively regulates HSP90 expression.,similarity:Contains 1 CRIB domain.,similarity:Contains 1 WH1 domain.,similarity:Contains 2 WH2 domains.,subcellular location:Preferentially localized in the cytoplasm when phosphorylated and in the nucleus when unphosphorylated.,subunit:Binds actin and the Arp2/3 complex. Interacts with CDC42. Binds to SH3 domains of GRB2. Interacts with the C-terminal SH3 domain of DNMBP. Interacts with the WW domains of PRPF40A/FBP11 (By similarity). Interacts with NOSTRIN. Interacts with Shigella flexneri protein icsA. The interaction with icsA enhances the affinity of WASL for Arp2/3, thus assembling a tight complex which has maximal activity in actin assembly.,		

Validation Data



Various whole cell lysates were separated by 4-20% SDS-PAGE, and the membrane was blotted with anti-N WASP (PT1211R) antibody. The HRP-conjugated Goat anti-Rabbit IgG (H + L) antibody was used to detect the antibody. Lane 1: 3T3-L1 Lane 2: A549 Lane 3: K562 Lane 4: C6 Predicted band size: 55kDa Observed band size: 65kDa

Contact information

Orders: order@immunoway.com
Support: tech@immunoway.com
Telephone: 877-594-3616 (Toll Free), 408-747-0185
Website: http://www.immunoway.com
Address: 2200 Ringwood Ave San Jose, CA 95131 USA



Please scan the QR code
to access additional
product information:
N WASP (PT1211R)
PT™ Rabbit mAb

For Research Use Only. Not for Use in Diagnostic Procedures.

[Antibody](#) | [ELISA Kits](#) | [Protein](#) | [Reagents](#)