

PFK-C (PT1208R) PT™ Rabbit mAb

CatalogNo: YM9050 **Recombinant** 

Key Features

Host Species

- Rabbit

Reactivity

- Human, Mouse, Rat

Applications

- WB, IHC, IF, IP, ELISA

MW

- 86kD (Calculated)
- 80kD (Observed)

Isotype

- IgG, Kappa

Storage

Storage* -15°C to -25°C/1 year (Do not lower than -25°C)**Formulation** PBS, 50% glycerol, 0.05% Proclin 300, 0.05% BSA

Recommended Dilution Ratios

IHC 1:1000-1:4000**WB 1:2000-1:10000****IF 1:200-1:1000****ELISA 1:5000-1:20000****IP 1:50-1:200**

Basic Information

Clonality Monoclonal**Clone Number** PT1208R

Immunogen Information

Specificity Endogenous

Target Information

Gene name PFKP

Protein Name 6-phosphofructokinase type C

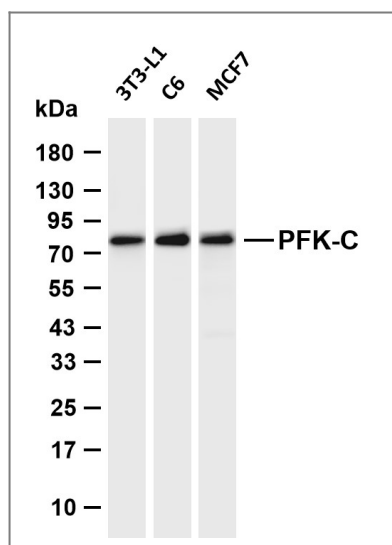
Organism	Gene ID	UniProt ID
Human	5214;	Q01813;
Mouse	56421;	Q9WUA3;
Rat	60416;	P47860;

Cellular Localization Cytoplasmic

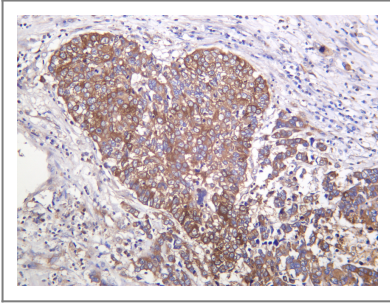
Tissue specificity Brain,Epithelium,Kidney,Pancreatic islet,Placenta,Prostate,

Function Catalytic activity:ATP + D-fructose 6-phosphate = ADP + D-fructose 1,6-bisphosphate.,cofactor:Magnesium.,enzyme regulation:Allosteric enzyme activated by ADP, AMP, or fructose bisphosphate and inhibited by ATP or citrate.,miscellaneous:In human PFK exists as a system of 3 types of subunits, PFKM (muscle), PFKL (liver) and PFKP (platelet) isoenzymes.,pathway:Carbohydrate degradation; glycolysis; D-glyceraldehyde 3-phosphate and glycerone phosphate from D-glucose: step 3/4.,similarity:Belongs to the phosphofructokinase family. Two domains subfamily.,subunit:Tetramer. Muscle is M4, liver is L4, and red cell is M3L, M2L2, or ML3. A subunit composition with a higher proportion of platelet type subunits is found in platelets, brain and fibroblasts.,

Validation Data



Various whole cell lysates were separated by 4-20% SDS-PAGE, and the membrane was blotted with anti-PFK-C (PT1208R) antibody. The HRP-conjugated Goat anti-Rabbit IgG (H + L) antibody was used to detect the antibody. Lane 1: 3T3-L1 Lane 2: C6 Lane 3: MCF7 Predicted band size: 86kDa Observed band size: 80kDa



Human lung carcinoma was stained with anti-PFK-C (PT1208R) Rabbit antibody

Contact information

Orders: order@immunoway.com
Support: tech@immunoway.com
Telephone: 877-594-3616 (Toll Free), 408-747-0185
Website: <http://www.immunoway.com>
Address: 2200 Ringwood Ave San Jose, CA 95131 USA



Please scan the QR code to access additional product information:
PFK-C (PT1208R)
PT™ Rabbit mAb

For Research Use Only. Not for Use in Diagnostic Procedures.

[Antibody](#) | [ELISA Kits](#) | [Protein](#) | [Reagents](#)