

Rho A/B/C (PT1207R) PT™ Rabbit mAb

CatalogNo: YM9049 **Recombinant** 

Key Features

Host Species

- Rabbit

Reactivity

- Human, Mouse, Rat

Applications

- WB, IHC, IF, ELISA

MW

- 22kD (Calculated)
- 22kD (Observed)

Isotype

- IgG, Kappa

Storage

Storage* -15°C to -25°C/1 year (Do not lower than -25°C)**Formulation** PBS, 50% glycerol, 0.05% Proclin 300, 0.05% BSA

Recommended Dilution Ratios

IHC 1:200-1:1000**WB 1:2000-1:10000****IF 1:200-1:1000****ELISA 1:5000-1:20000**

Basic Information

Clonality Monoclonal**Clone Number** PT1207R

Immunogen Information

Immunogen The specific immunogen used to produce this antibody is proprietary information.**Specificity** Endogenous

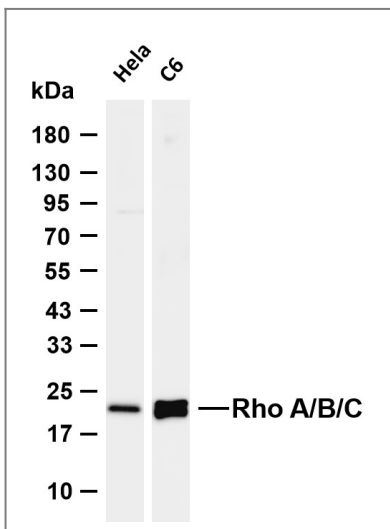
Target Information

Gene name RHOA/B/C

Protein Name

Organism	Gene ID	UniProt ID
Human	387 ; 388 ; 389 ;	P61586 ; P62745 ; P08134 ;
Mouse	11848 ; 11852 ; 11853 ;	Q9QUI0 ; P62746 ; Q62159 ;
Rat	117273 ; 64373 ;	P61589 ; P62747 ;

Validation Data



Various whole cell lysates were separated by 4-20% SDS-PAGE, and the membrane was blotted with anti-Rho A/B/C (PT1207R) antibody. The HRP-conjugated Goat anti-Rabbit IgG (H + L) antibody was used to detect the antibody. Lane 1: HeLa Lane 2: C6 Predicted band size: 22kDa Observed band size: 22kDa

Contact information

Orders: order@immunoway.com
Support: tech@immunoway.com
Telephone: 877-594-3616 (Toll Free), 408-747-0185
Website: <http://www.immunoway.com>
Address: 2200 Ringwood Ave San Jose, CA 95131 USA



Please scan the QR code to access additional product information:
Rho A/B/C (PT1207R) PT™ Rabbit mAb