

TOMM40 (PT1178R) PT™ Rabbit mAb

CatalogNo: YM9027 **Recombinant** 

Key Features

Host Species

- Rabbit

Reactivity

- Human

Applications

- WB,IHC,IF,IP,ELISA

MW

- 38kD (Calculated)
- 38kD (Observed)

Isotype

- IgG,Kappa

Recommended Dilution Ratios

IHC 1:200-1:1000**WB 1:2000-1:10000****IF 1:200-1:1000****ELISA 1:5000-1:20000****IP 1:50-1:200**

Storage

Storage* -15°C to -25°C/1 year(Do not lower than -25°C)**Formulation** PBS, 50% glycerol, 0.05% Proclin 300, 0.05%BSA

Basic Information

Clonality Monoclonal**Clone Number** PT1178R

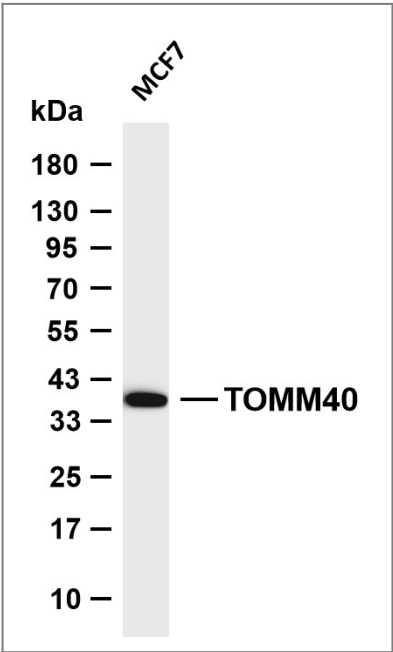
Immunogen Information

Specificity Endogenous

Target Information

Gene name	TOMM40 C19orf1 PEREC1 TOM40		
Protein Name	Mitochondrial import receptor subunit TOM40 homolog (Protein Haymaker) (Translocase of outer membrane 40 kDa subunit homolog) (p38.5)		
	Organism	Gene ID	UniProt ID
	Human	10452 ;	O96008 ;
	Mouse	53333 ;	Q9QYA2 ;
	Rat	308416 ;	Q75Q40 ;
Cellular Localization	Mitochondrion outer membrane ; Multi-pass membrane protein . Associates with the mitochondria-associated ER membrane via interaction with BCAP31. .		
Function	Channel-forming protein essential for import of protein precursors into mitochondria . Plays a role in the assembly of the mitochondrial membrane respiratory chain NADH dehydrogenase (Complex I) by forming a complex with BCAP31 and mediating the translocation of Complex I components from the cytosol to the mitochondria .		

Validation Data



Various whole cell lysates were separated by 4-20% SDS-PAGE, and the membrane was blotted with anti-TOMM40 (PT1178R) antibody. The HRP-conjugated Goat anti-Rabbit IgG (H + L) antibody was used to detect the antibody. Lane 1: MCF7 Predicted band size: 38kDa Observed band size: 38kDa

Contact information

Orders: order@immunoway.com
Support: tech@immunoway.com
Telephone: 877-594-3616 (Toll Free), 408-747-0185
Website: http://www.immunoway.com
Address: 2200 Ringwood Ave San Jose, CA 95131 USA



Please scan the QR code
to access additional
product information:
TOMM40 (PT1178R)
PT™ Rabbit mAb

For Research Use Only. Not for Use in Diagnostic Procedures.

[Antibody](#) | [ELISA Kits](#) | [Protein](#) | [Reagents](#)