

Nrf2 (Phospho Ser40) (PT1196R) PT™ Rabbit mAb

CatalogNo: YM9005 **Recombinant** 

Key Features

Host Species

- Rabbit

Reactivity

- Human, Mouse, Rat

Applications

- WB, IHC, IF, ELISA

MW

- 68kD (Calculated)
- 100kD (Observed)

Isotype

- IgG, Kappa

Recommended Dilution Ratios

IHC 1:200-1:1000**WB 1:10000-1:50000****IF 1:200-1:1000****ELISA 1:5000-1:20000**

Storage

Storage* -15°C to -25°C/1 year (Do not lower than -25°C)**Formulation** PBS, 50% glycerol, 0.05% Proclin 300, 0.05% BSA

Basic Information

Clonality Monoclonal**Clone Number** PT1196R

Immunogen Information

Specificity Nrf2 (Phospho Ser40) Antibody detects endogenous levels of Nrf2 protein only when phosphorylated at S40. The name of modified sites may be influenced by many factors, such as species (the modified site was not originally found in human samples) and the change of protein sequence (the previous protein sequence is incomplete, and the protein sequence may be prolonged with the development of protein sequencing technology). When naming, we will use the "numbers" in historical reference to keep the sites consistent with the reports. The antibody binds to the following modification sequence (lowercase letters are modification sites): DFsQR

| Target Information

Gene name NFE2L2 NRF2

Protein Name NRF2(Phospho-Ser40)

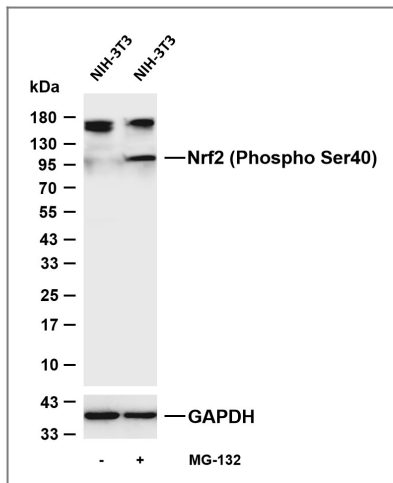
Organism	Gene ID	UniProt ID
Human	4780 ;	Q16236 ;
Mouse	18024 ;	Q60795 ;
Rat	83619 ;	O54968 ;

Cellular Localization Cytoplasm, cytosol . Nucleus . Cytosolic under unstressed conditions: ubiquitinated and degraded by the BCR(KEAP1) E3 ubiquitin ligase complex (PubMed:15601839, PubMed:21196497). Translocates into the nucleus upon induction by electrophilic agents that inactivate the BCR(KEAP1) E3 ubiquitin ligase complex (PubMed:21196497). .

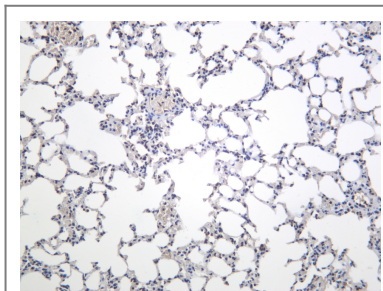
Tissue specificity Widely expressed. Highest expression in adult muscle, kidney, lung, liver and in fetal muscle.

Function Domain:Acidic activation domain in the N-terminus, and DNA binding domain in the C-terminus.,Function:Transcription activator that binds to antioxidant response (ARE) elements in the promoter regions of target genes. Important for the coordinated up-regulation of genes in response to oxidative stress. May be involved in the transcriptional activation of genes of the beta-globin cluster by mediating enhancer activity of hypersensitive site 2 of the beta-globin locus control region.,PTM:Phosphorylation of Ser-40 by PKC in response to oxidative stress dissociates NFE2L2 from its cytoplasmic inhibitor KEAP1, promoting its translocation into the nucleus.,similarity:Belongs to the bZIP family.,similarity:Belongs to the bZIP family. CNC subfamily.,similarity:Contains 1 bZIP domain.,subcellular location:Cytosolic under unstressed conditions, translocates into the nucleus upon induction by electrophilic agents.,subunit:Heterodimer. May bind DNA with an unknown protein. Interacts with KEAP1. Interacts via its leucine-zipper domain with the coiled-coil domain of PMF1.,tissue specificity:Widely expressed. Highest expression in adult muscle, kidney, lung, liver and in fetal muscle.,

| Validation Data



Various whole cell lysates were separated by 4-20% SDS-PAGE, and the membrane was blotted with anti-Nrf2 (Phospho Ser40) (PT1196R) antibody. The HRP-conjugated Goat anti-Rabbit IgG (H + L) antibody was used to detect the antibody. Lane 1: NIH-3T3 Lane 2: NIH-3T3 was treated with MG-132 (2 μ M) for 18 hours Predicted band size: 68kDa Observed band size: 100kDa



Mouse lung was stained with anti-Nrf2 (Phospho Ser40) (PT1196R) Rabbit antibody

Contact information

Orders: order@immunoway.com
 Support: tech@immunoway.com
 Telephone: 877-594-3616 (Toll Free), 408-747-0185
 Website: <http://www.immunoway.com>
 Address: 2200 Ringwood Ave San Jose, CA 95131 USA



Please scan the QR code to access additional product information:

Nrf2 (Phospho Ser40) (PT1196R) PT™ Rabbit mAb

For Research Use Only. Not for Use in Diagnostic Procedures.

[Antibody](#) | [ELISA Kits](#) | [Protein](#) | [Reagents](#)