

IL-1RI (PT1193R) PT™ Rabbit mAb

CatalogNo: YM9002 **Recombinant** 

Key Features

Host Species

- Rabbit

Reactivity

- Mouse,Rat

Applications

- WB,IF,ELISA

MW

- 65kD (Calculated)
- 80kD (Observed)

Isotype

- IgG,Kappa

Storage

Storage* -15°C to -25°C/1 year(Do not lower than -25°C)**Formulation** PBS, 50% glycerol, 0.05% Proclin 300, 0.05%BSA

Recommended Dilution Ratios

WB 1:2000-1:10000**IF 1:200-1:1000****ELISA 1:5000-1:20000**

Basic Information

Clonality Monoclonal**Clone Number** PT1193R

Immunogen Information

Specificity Endogenous

Target Information

Gene name IL1R1

Protein Name Interleukin-1 receptor type 1

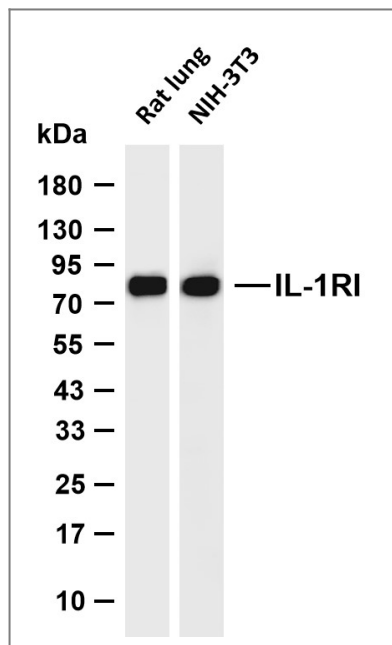
Organism	Gene ID	UniProt ID
Human	3554;	P14778;
Mouse		P13504;

Cellular Localization Membrane ; Single-pass type I membrane protein . Cell membrane . Secreted .

Tissue specificity Expressed in T-helper cell subsets. Preferentially expressed in T-helper 1 (Th1) cells.

Function Function:Receptor for interleukin-1 alpha (IL-1A), beta (IL-1B), and interleukin-1 receptor antagonist protein (IL-1RA). Binding to the agonist leads to the activation of NF-kappa-B. Signaling involves formation of a ternary complex containing IL1RAP, TOLLIP, MYD88, and IRAK1 or IRAK2.,similarity:Belongs to the interleukin-1 receptor family.,similarity:Contains 1 TIR domain.,similarity:Contains 3 Ig-like C2-type (immunoglobulin-like) domains.,subunit:Binds IL1RAP.,

Validation Data



Various whole cell lysates were separated by 4-20% SDS-PAGE, and the membrane was blotted with anti-IL-1RI (PT1193R) antibody. The HRP-conjugated Goat anti-Rabbit IgG (H + L) antibody was used to detect the antibody. Lane 1: Rat lung Lane 2: NIH-3T3 Predicted band size: 65kDa Observed band size: 80kDa

Contact information

Orders: order@immunoway.com
Support: tech@immunoway.com
Telephone: 877-594-3616 (Toll Free), 408-747-0185
Website: http://www.immunoway.com
Address: 2200 Ringwood Ave San Jose, CA 95131 USA



Please scan the QR code
to access additional
product information:
IL-1RI (PT1193R)
PT™ Rabbit mAb

For Research Use Only. Not for Use in Diagnostic Procedures.

[Antibody](#) | [ELISA Kits](#) | [Protein](#) | [Reagents](#)