

## ALDH16A1 (PT1090R) PT® Rabbit mAb

CatalogNo: YM8912 **Recombinant** 

### Key Features

#### Host Species

- Rabbit

#### Reactivity

- Human, Mouse, Rat

#### Applications

- WB, IHC

#### MW

- 88kDa (Calculated)
- 88kDa (Observed)

#### Isotype

- IgG, Kappa

### Recommended Dilution Ratios

IHC 1:200-1:1000

WB 1:1000-1:5000

### Storage

**Storage\*** -15°C to -25°C/1 year(Do not lower than -25°C)

**Formulation** PBS, 50% glycerol, 0.05% Proclin 300, 0.05%BSA

### Basic Information

**Clonality** Monoclonal

**Clone Number** PT1090R

### Immunogen Information

**Specificity** Endogenous

### Target Information

**Gene name** ALDH16A1

**Protein Name** Aldehyde dehydrogenase family 16 member A1

**Organism**

**Gene ID**

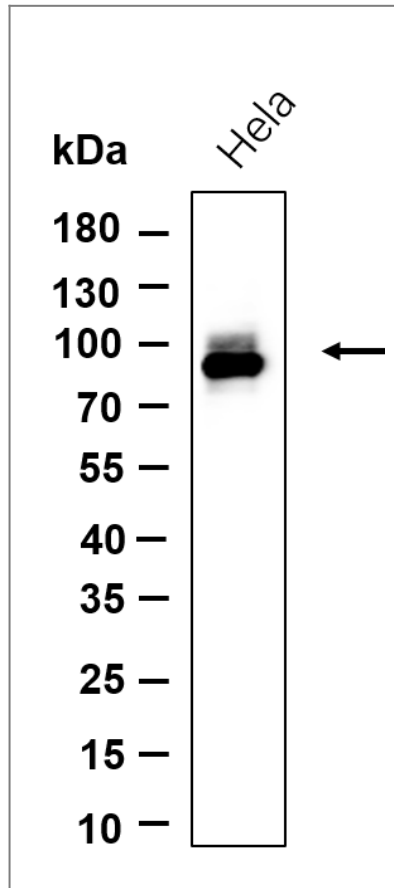
**UniProt ID**

Human

[126133](#);

[Q8IZ83](#);

## Validation Data



Western blot analysis of lysates from HeLa cell, primary antibody was diluted at 1:1000, 4° over night, Dylight 800 secondary antibody (Immunoway:RS23920) was diluted at 1:10000, 37° 1 hour.

## Contact information

Orders: [order@immunoway.com](mailto:order@immunoway.com)  
Support: [tech@immunoway.com](mailto:tech@immunoway.com)  
Telephone: 877-594-3616 (Toll Free), 408-747-0185  
Website: <http://www.immunoway.com>  
Address: 2200 Ringwood Ave San Jose, CA 95131 USA



Please scan the QR code to access additional product information:  
**ALDH16A1**  
**(PT1090R) PT®**  
**Rabbit mAb**