

## KRTHB3 (PT1080R) PT® Rabbit mAb

CatalogNo: YM8902 **Recombinant** 

### Key Features

#### Host Species

- Rabbit

#### Reactivity

- Human, Mouse, Rat

#### Applications

- WB

#### MW

- 54kDa (Calculated)
- 54kDa (Observed)

#### Isotype

- IgG, Kappa

### Recommended Dilution Ratios

**WB 1:1000-1:5000**

### Storage

**Storage\*** -15°C to -25°C/1 year(Do not lower than -25°C)

**Formulation** PBS, 50% glycerol, 0.05% Proclin 300, 0.05%BSA

### Basic Information

**Clonality** Monoclonal

**Clone Number** PT1080R

### Immunogen Information

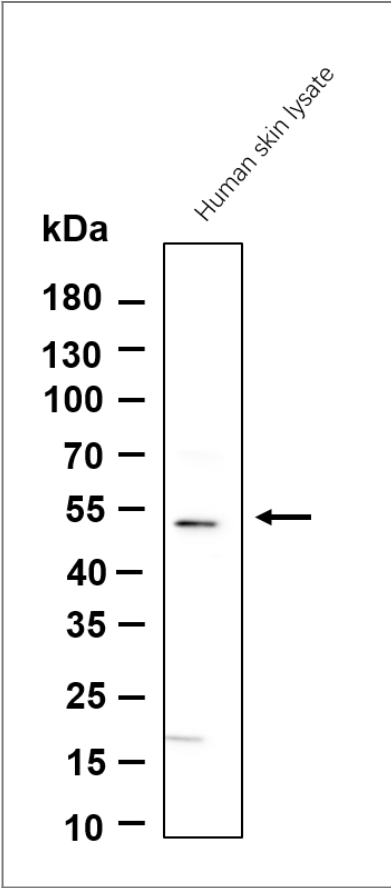
**Specificity** Endogenous

### Target Information

**Gene name** KRT83 KRTHB3

Protein Name	Keratin, type II cuticular Hb3 (Hair keratin K2.10) (Keratin-83) (K83) (Type II hair keratin Hb3) (Type-II keratin Kb23)		
	Organism	Gene ID	UniProt ID
	Human	<a href="#">3889;</a>	<a href="#">P78385;</a>
	Mouse		<a href="#">Q6IMF0;</a>
Cellular Localization	extracellular space,keratin filament,		
Tissue specificity	Synthesis begins in the cortex 10-15 cell layers above the apex of the dermal papilla and ends abruptly in the middle of the cortex.		
Function	Caution:Maps to a duplicated region on chromosome 12.,Disease:Defects in KRT83 are a cause of Monilethrix [MIM:158000]. Monilethrix is an autosomal dominant hair disorder characterized clinically by alopecia and follicular papules. Affected hairs have uniform elliptical nodes of normal thickness and intermittent constrictions, internodes at which the hair easily breaks. Usually only the scalp is involved, but in severe forms, the secondary sexual hair, eyebrows, eyelashes, and nails may also be affected.,miscellaneous:There are two types of hair/microfibrillar keratin, I (acidic) and II (neutral to basic).,similarity:Belongs to the intermediate filament family.,subunit:Heterotetramer of two type I and two type II keratins.,tissue specificity:Synthesis begins in the cortex 10-15 cell layers above the apex of the dermal papilla and ends abruptly in the middle of the cortex.,		

Validation Data



Western blot analysis of lysates from Human skin lysate cell, primary antibody was diluted at 1:1000, 4°over night, Dylight 800 secondary antibody(Immunoway:RS23920)was diluted at 1:10000, 37° 1hour.

## | Contact information

Orders: order@immunoway.com  
Support: tech@immunoway.com  
Telephone: 877-594-3616 (Toll Free), 408-747-0185  
Website: <http://www.immunoway.com>  
Address: 2200 Ringwood Ave San Jose, CA 95131 USA



Please scan the QR code  
to access additional  
product information:  
**KRTHB3 (PT1080R)**  
**PT® Rabbit mAb**

---

For Research Use Only. Not for Use in Diagnostic Procedures.

[Antibody](#) | [ELISA Kits](#) | [Protein](#) | [Reagents](#)