

BRAT1 (PT0803R) PT™ Rabbit mAb

CatalogNo: YM8898 **Recombinant** 

Key Features

Host Species

- Rabbit

Reactivity

- Human

Applications

- WB,IF,ICC,FC,IP

MW

- 90kD (Observed)

Isotype

- IgG,Kappa

Recommended Dilution Ratios

WB 1:1000-5000**ICC/IF 1:100-300****FC 1:100-300****IP 1:50-100**

Storage

Storage* -15°C to -25°C/1 year(Do not lower than -25°C)**Formulation** PBS, 50% glycerol, 0.05% Proclin 300, 0.05%BSA

Basic Information

Clonality Monoclonal**Clone Number** PT0803R

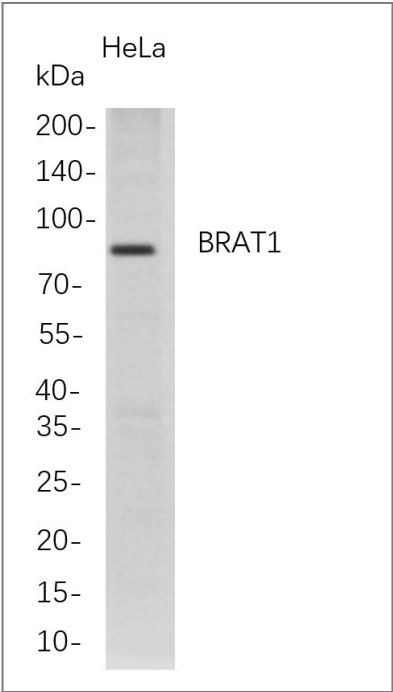
Immunogen Information

Specificity Endogenous

Target Information

Gene name	BRAT1;BAAT1;C7orf27		
Protein Name	BRCA1-associated ATM activator 1;BRCA1-associated protein required for ATM activation protein 1;		
	Organism	Gene ID	UniProt ID
	Human	221927 ;	Q6PJG6 ;
Cellular Localization	Nucleus. Cytoplasm. Note=Present at double strand breaks (DSBs)following ionizing radiation treatment. The ubiquitinated form localizes in the nucleus in a NDFIP1-dependent manner..		
Tissue specificity	Ubiquitously expressed. {ECO:0000269 PubMed:16452482}.		
Function	Involved in DNA damage response; activates kinases ATM, SMC1A and PRKDC by modulating their phosphorylation status following ionizing radiation (IR) stress (PubMed:16452482, PubMed:22977523). Plays a role in regulating mitochondrial function and cell proliferation (PubMed:25070371). Required for protein stability of MTOR and MTOR-related proteins, and cell cycle progress by growth factors (PubMed:25657994). {ECO:0000269 PubMed:16452482, ECO:0000269 PubMed:22977523, ECO:0000269 PubMed:25070371, ECO:0000269 PubMed:25657994}.		

Validation Data



Western Blot analysis of HeLa whole cell lysates were separated by 4-20% SDS-PAGE, and the membrane was blotted with anti-BRAT1 rabbit mAb. The HRP-conjugated Goat anti-Rabbit IgG(H + L) antibody was used to detect the antibody.

Contact information

Orders: order@immunoway.com
Support: tech@immunoway.com
Telephone: 877-594-3616 (Toll Free), 408-747-0185
Website: http://www.immunoway.com
Address: 2200 Ringwood Ave San Jose, CA 95131 USA



Please scan the QR code
to access additional
product information:
BRAT1 (PT0803R)
PT™ Rabbit mAb

For Research Use Only. Not for Use in Diagnostic Procedures.

[Antibody](#) | [ELISA Kits](#) | [Protein](#) | [Reagents](#)